

# PC-IP Release History

Oct 2010

## INDEX

<b>1.-</b>	<b>VERSION 2.0.0 (20-06-08)</b> .....	<b>3</b>
1.1.-	MPEG LAYER II AVAILABLE .....	3
<b>2.-</b>	<b>VERSION 2.0.2 (23-10-08)</b> .....	<b>3</b>
2.1.-	CALL LOG .....	3
2.2.-	VU-METERS RUN OFFLINE .....	5
2.3.-	HASP KEY DRIVERS .....	5
<b>3.-</b>	<b>VERSION 2.0.3 (29-04-09)</b> .....	<b>5</b>
3.1.-	FILE PLAYER OPTION .....	5
3.2.-	AUDIO GAIN CONTROLS .....	7
<b>4.-</b>	<b>VERSION 2.0.4 (23-09-2010)</b> .....	<b>8</b>
4.1.-	WINDOWS7 COMPATIBILITY .....	8
4.2.-	QUALITY IMPROVEMENTS .....	8

## **INTRODUCTION**

This document is aimed at providing an overview of all changes made to the PC-IP software. Should you need further information about any particular change or new feature, please contact [support@musicamusa.com](mailto:support@musicamusa.com). We will be pleased to help you.

### **1.- VERSION 2.0.0 (06-20-08)**

---

Changes on version 2.0.0 are listed bellow:

#### **1.1.- MPEG LAYER II AVAILABLE**

In this version Mpeg Layer II is available as standard.

### **2.- VERSION 2.0.2 (10-23-08)**

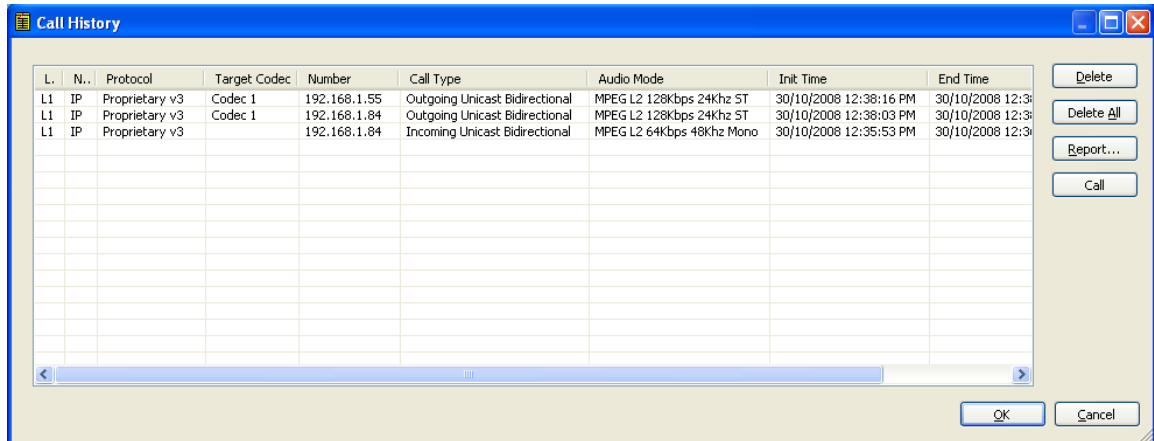
---

Changes on version 2.0.2 are listed bellow:

#### **2.1.- CALL LOG**

An history report has been included to record the input and output calls according to the following information: telephone/IP, audio modes, date and start/end time, length of each call, etc...

# PC-IP Release History

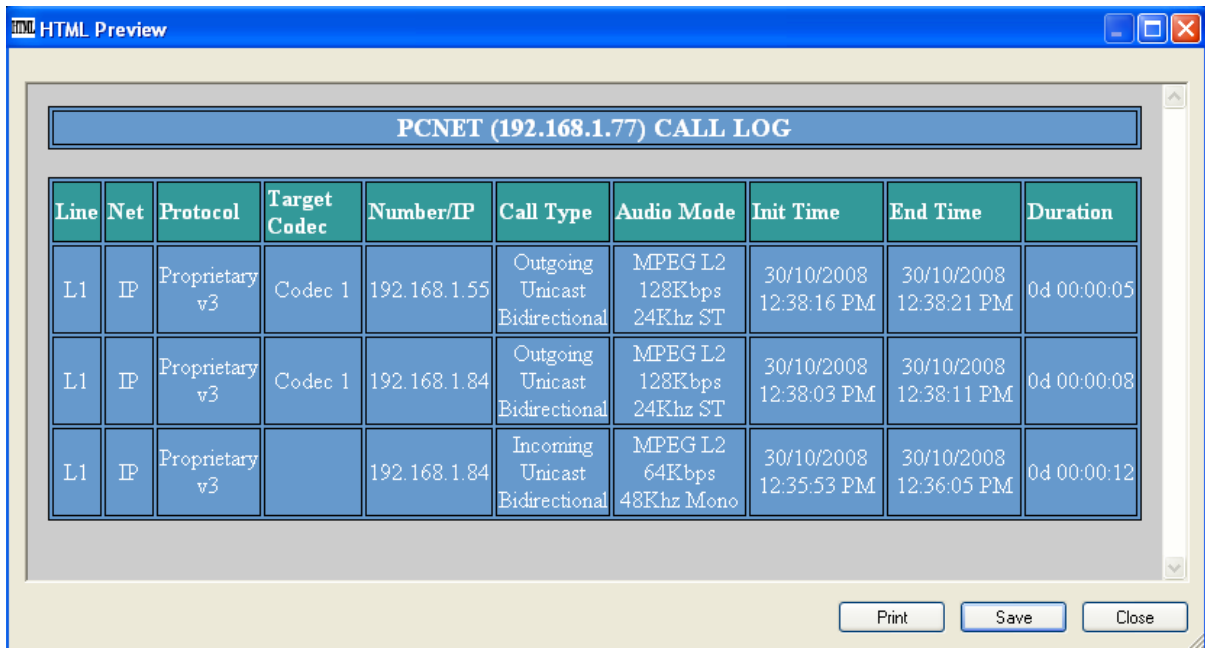


The screenshot shows a window titled "Call History" with a table of call records. The table has columns for Line, Net, Protocol, Target Codec, Number, Call Type, Audio Mode, Init Time, and End Time. There are three rows of data.

L.	N.	Protocol	Target Codec	Number	Call Type	Audio Mode	Init Time	End Time
L1	IP	Proprietary v3	Codec 1	192.168.1.55	Outgoing Unicast Bidirectional	MPEG L2 128Kbps 24Khz ST	30/10/2008 12:38:16 PM	30/10/2008 12:38:21 PM
L1	IP	Proprietary v3	Codec 1	192.168.1.84	Outgoing Unicast Bidirectional	MPEG L2 128Kbps 24Khz ST	30/10/2008 12:38:03 PM	30/10/2008 12:38:11 PM
L1	IP	Proprietary v3		192.168.1.84	Incoming Unicast Bidirectional	MPEG L2 64Kbps 48Khz Mono	30/10/2008 12:35:53 PM	30/10/2008 12:36:05 PM

Figure 1. Call log window.

A report of the calls in html can be created with options to save and print:



The screenshot shows a window titled "HTML Preview" displaying an HTML log view. The log is titled "PCNET (192.168.1.77) CALL LOG" and contains a table with columns for Line, Net, Protocol, Target Codec, Number/IP, Call Type, Audio Mode, Init Time, End Time, and Duration. There are three rows of data.

Line	Net	Protocol	Target Codec	Number/IP	Call Type	Audio Mode	Init Time	End Time	Duration
L1	IP	Proprietary v3	Codec 1	192.168.1.55	Outgoing Unicast Bidirectional	MPEG L2 128Kbps 24Khz ST	30/10/2008 12:38:16 PM	30/10/2008 12:38:21 PM	0d 00:00:05
L1	IP	Proprietary v3	Codec 1	192.168.1.84	Outgoing Unicast Bidirectional	MPEG L2 128Kbps 24Khz ST	30/10/2008 12:38:03 PM	30/10/2008 12:38:11 PM	0d 00:00:08
L1	IP	Proprietary v3		192.168.1.84	Incoming Unicast Bidirectional	MPEG L2 64Kbps 48Khz Mono	30/10/2008 12:35:53 PM	30/10/2008 12:36:05 PM	0d 00:00:12

Figure 2. Html log view with print and save options.

## 2.2.- VU-METERS RUN OFFLINE

The Vu-meters will display the signal level information on the right and left channels even when there is no connection.

## 2.3.- HASP KEY DRIVERS

The most recent drivers for the USB dongle are included within the installation package.

## 3.- VERSION 2.0.3 (04-29-09)

---

Changes on version 2.0.3 are listed below:

### 3.1.- FILE PLAYER OPTION

PC-IP can be enabled for the <File Player> feature. This is a licensed option.

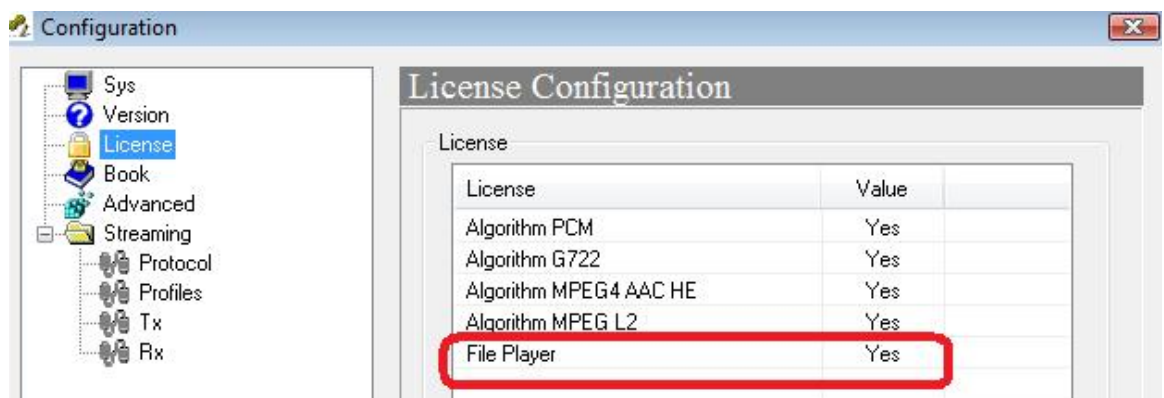


Figure 3. Licence window.

The <File Player> feature allows the transcoding of any Microsoft supported sound file (.mp3, .wma, .wav, etc.) into the selected compression algorithm and concurrent streaming over IP.

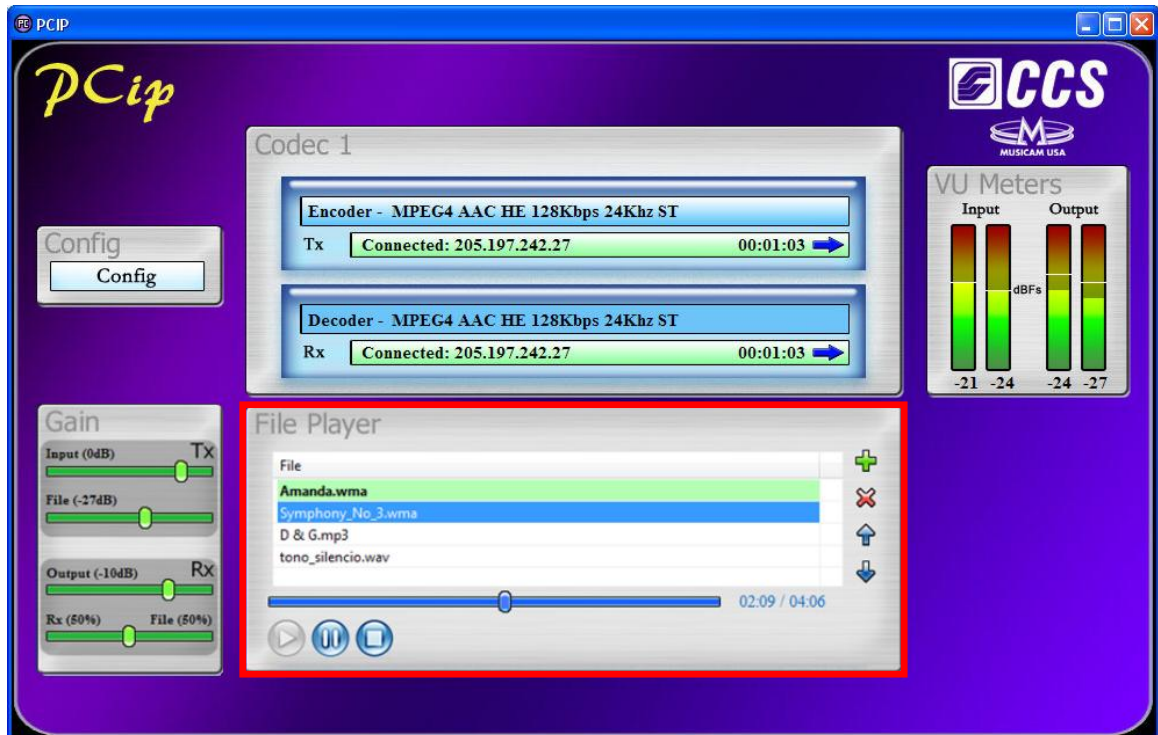


Figure 3. File player window.

The user might pick up some sound files from any computer folder and make those files available to the <File Player>. Addition, deletion and scrolling thru the player list is possible at any time without disturbing the output stream in progress.<sup>1</sup>

Double clicking starts the sound file, which in consequence can be stopped or hold on "pause". Fast Forward or Fast Rewind is possible moving the lineal progress bar underneath the play list. The file player output will be mixed together with microphone input and streamed out.

The user can monitor the progress of the file player enabling the audio feedback on the local headphones according to the picture below <Mix File with RX>.<sup>2</sup>

<sup>1</sup> Please remind that the play list is not persistent after closing the PC-IP application. This means that PC-IP starts every time with an empty play list.

<sup>2</sup> The local audio feedback is available even no IP streaming connection is in progress.

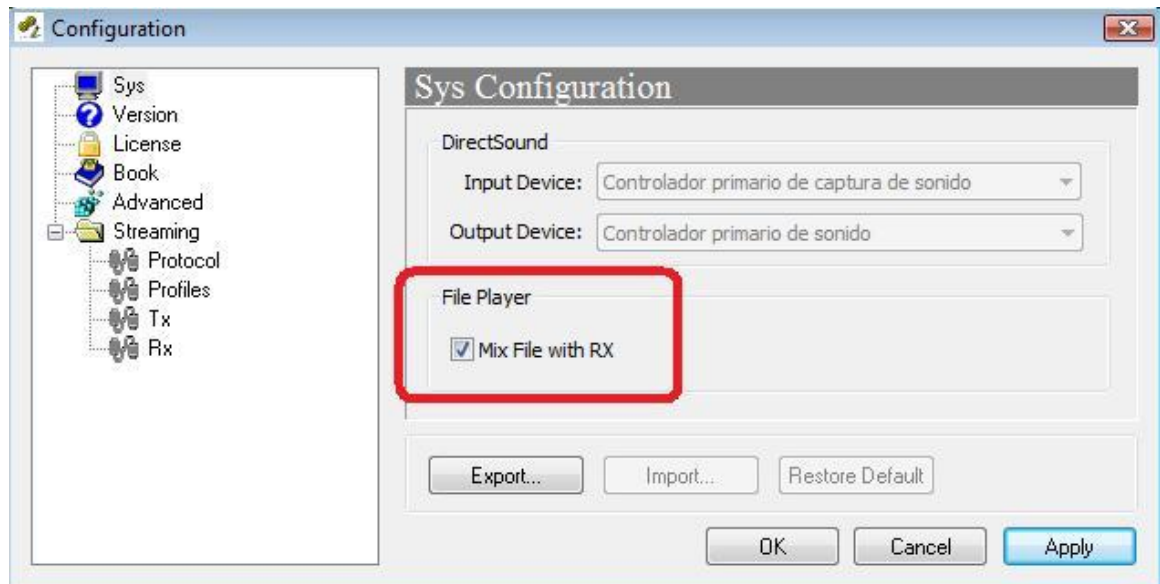


Figure 4. File player mix option.

### 3.2.- AUDIO GAIN CONTROLS

The PC-IP includes **audio gain controls** for the ingress and egress audio stream for every PC-IP configuration. The gain ranges from -96dB to +18dB for both controls.

However if the File Player option with local feedback is enabled, the audio gain control is an essential control for balancing all the sound sources involved for a panoramic sound.

On the TX path (egress audio stream) the user can balance the sound from the microphone against the File Player sound level. Two independent faders are provided **<Input>** (microphone input) and **<File>**.

On the RX path, which applies actually to the local headphones, the user might trim the overall headphone levels by the control **<Output>**. The lowest control is actually a local headphone balance. The user might emphasize the local file player sound or the sound from the studio.

All those **audio gain controls** might be trimmed during a live contribution without perceptible noise artifacts for the audience.

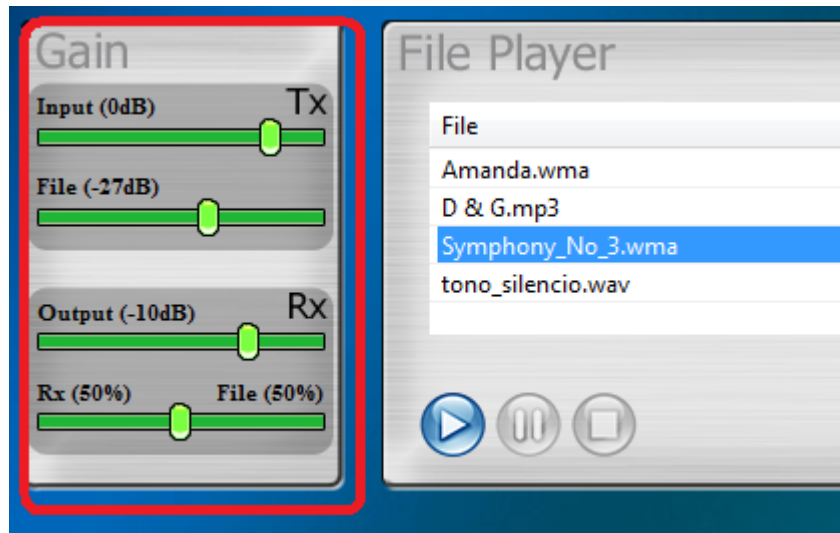


Figure 5. Gain controls.

## 4.- VERSION 2.0.4 (10-21-10)

---

Changes on version 2.0.4 are listed below:

### 4.1.- WINDOWS7 COMPATIBILITY

The PC-IP software codec can be installed now on PCs with Windows7 operative system. The drivers to support the USB dongle with Windows7 are included now within the installation package.

### 4.2.- QUALITY IMPROVEMENTS

Some audio compression parameters have been adjusted to obtain a better audio quality in some AAC HE configurations.