

MUSICAM USA

Corporate Computer Systems

AUDIOSTAR

Quick Start Guide

MUSICAM USA

AUDIOSTAR Quick Start Guide

©Corporate Computer Systems
670 North Beers St. • Bldg. 4
Holmdel, NJ 07733
Phone 732.739.5600 • Fax 732.739.1818

Table of Contents

1	CONNECTIONS	2
1.1	CONNECTIONS AND CABLES	2
1.1.1	<i>IP Connections</i>	2
1.1.2	<i>Audio Connections</i>	2
2	INSTALLING AUDIOSTAR	3
2.1	INSTALL AUDIOSTAR FROM CD OR WEB DOWNLOAD	3
3	CONTROLLING AUDIOSTAR	9
3.1	AUDIOSTAR CONSOLE	9
3.2	MENU NAVIGATION	10
3.3	NAVIGATION KEYPAD	10
3.4	QUICK KEYS	11
3.5	VU METERS	12
4	SETUP AND TEST	13
4.1	BASIC CONSOLE CONTROL FUNCTIONS	13
4.2	SETUP TCP/IP SETTINGS	13
4.3	SETUP AUDIO INPUT SOURCE	14
4.4	SETUP AUDIO OUTPUT SOURCE	14
4.5	TEST THE AUDIOSTAR	14
4.5.1	<i>Loopback Test</i>	14
4.5.2	<i>Connect AudioStar to AudioStar via IP</i>	15
4.5.2.1	IP Connection Test Setup:	15
4.5.2.2	Test IP Connections	15

Before You Begin

This guide is written for technical qualified personnel with experience installing professional audio equipment.

1 Connections

Describing all of the AudioStar connections.

1.1 Connections and Cables

1.1.1 IP Connections

The AudioStar requires a 10/100 BaseT local area network (LAN) interface. Most PC's are already equipped with a LAN interface. A Category 5 Ethernet LAN cable is included in the AudioStar packaging to connect the PC running AudioStar to your LAN (Network). You can also connect a PC running AudioStar directly to another PC running AudioStar (or NetStar) using a Category 5 crossover (Null) LAN cable.

1.1.2 Audio Connections

The AudioStar requires a Direct Sound™ compatible sound card be installed in the PC/laptop computer on which AudioStar is installed. You can usually use either the standard sound card that comes built in to your Laptop/PC, or you can purchase a professional grade sound card to give you the same performance as hardware codecs.

The sound card must support full-duplex audio, which is the ability to play and record simultaneously (most sound cards do this). Check that the card operates at a decent sample rate - 44.1kHz is fine and 48kHz is ideal.

The sound card must be Direct Sound™ compatible. Most of the sound cards available are. The card should be capable of good quality recording and playback - The sound through the **AudioStar** software will only be as good as the sound card you are using. Firewire, USB, PCMCIA, and PCI cards are all compatible as long as they meet the requirements stated above.

2 Installing AudioStar

How to Install the AudioStar software.

2.1 Install AudioStar from CD or web download

Insert the **AudioStar** CD-ROM (provided upon purchase) into the PC/Laptop's CD-ROM drive and run the program "Setup.exe".

Or, go to <http://www.musicamusa.com/products/audiostar/download.htm>, and download the installation file "astar.exe", and execute this file.

When you do this, the below screen will appear:



Click on "Next" to begin installation of the **AudioStar** Software. Follow the onscreen instructions of the Setup program.

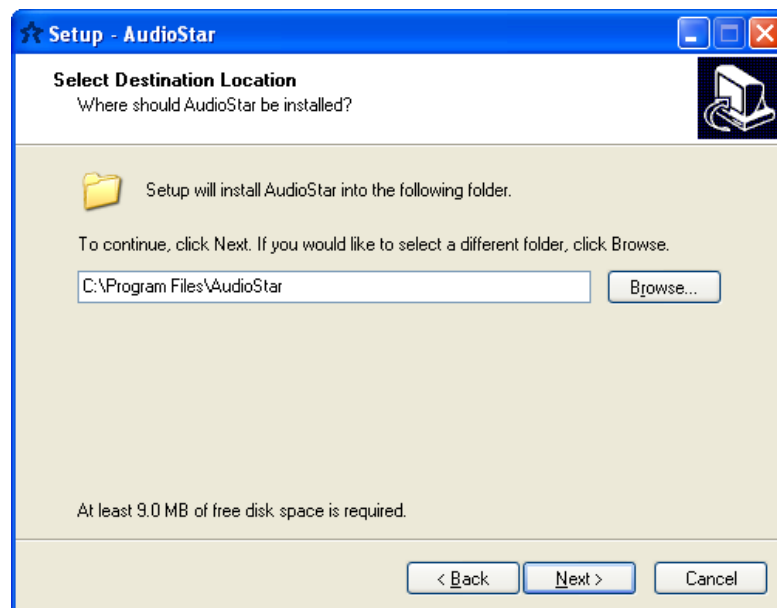
The first screen that appears should look like this:



A USB unlock dongle (key) is provided upon purchase of the AudioStar software. If you do not have the USB unlock dongle (key), the AudioStar software will default to "demo" mode.

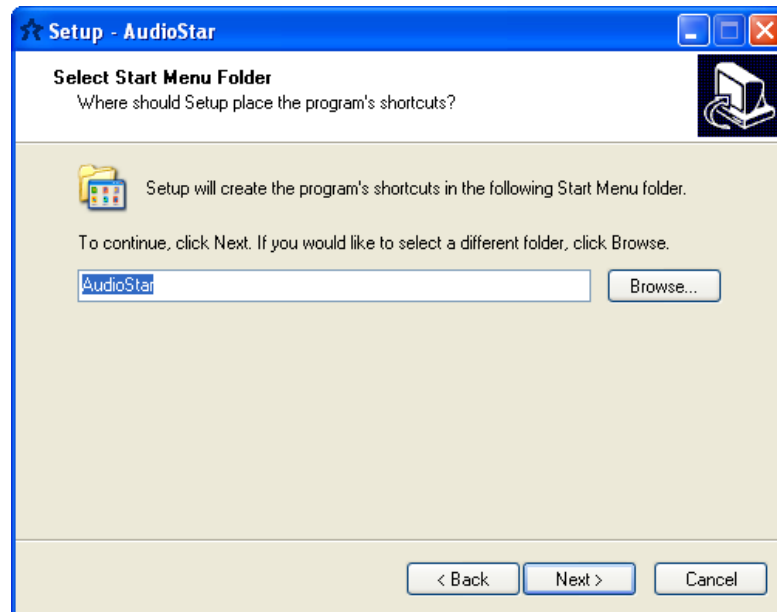
Demo mode limits continuous audio and connections to only 10-30 minutes. Once the USB Unlock key is installed, there will be no restrictions. Click on "Next" to continue.

The next screen prompts you as to where to install the **AudioStar** software.



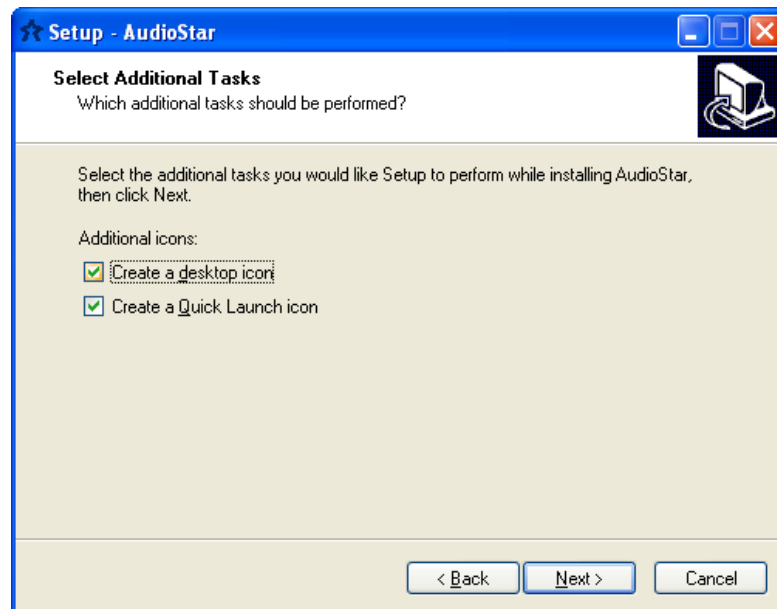
Select where you want AudioStar installed and click on "Next" to continue.

The next screen prompts you as to which Start Menu folder to use for the **AudioStar's** shortcuts.



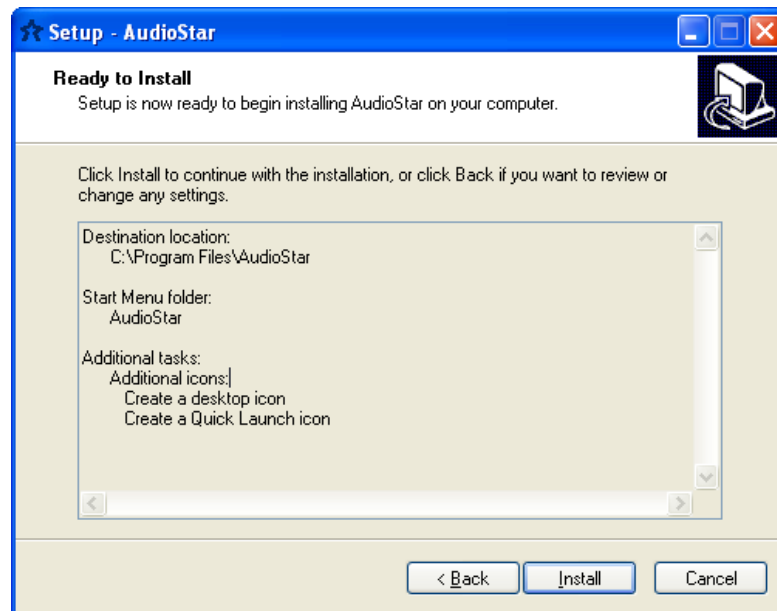
Click on “Next” to continue.

The next screen allows you to create Desktop and/or Quick Launch icons for **AudioStar**.



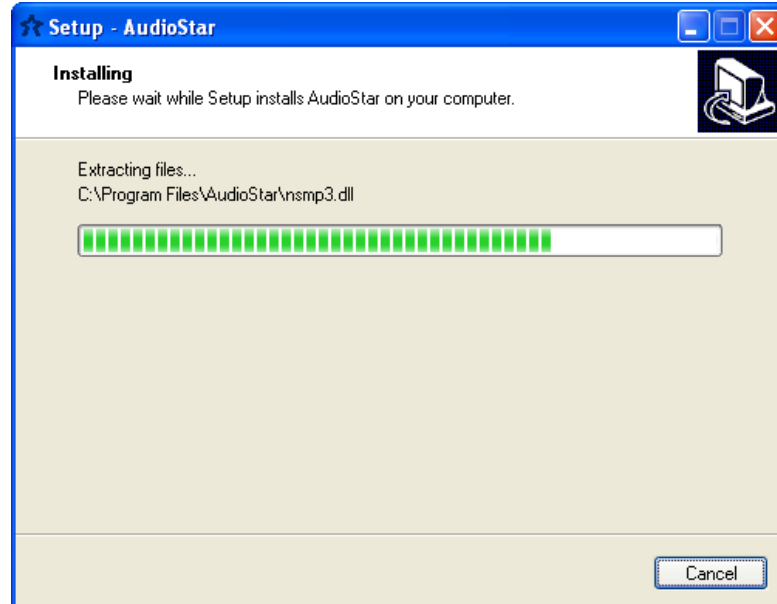
Check the desired options, and click on “Next” to continue.

A summary screen will appear showing you the options you selected:

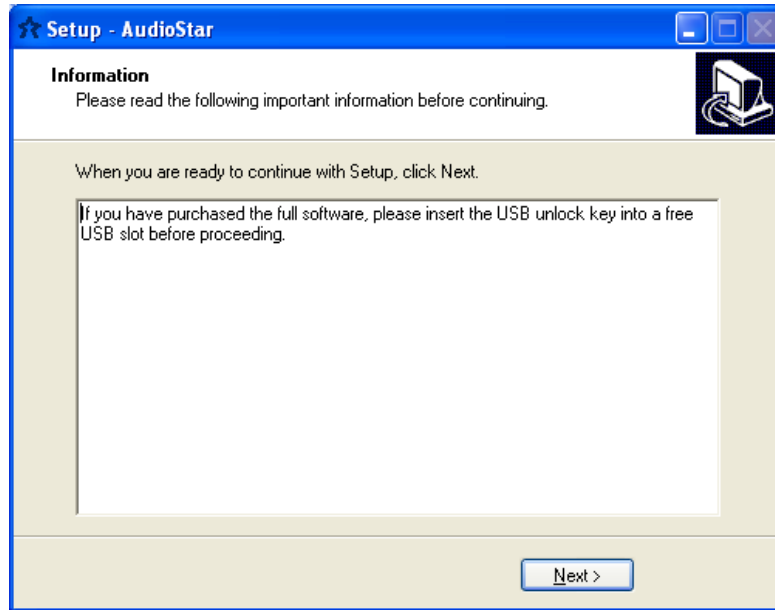


Review your choices, and click “Install” to start the installation process.

An installation process screen will be shown:



Next, a screen will be displayed prompting you to install the USB unlock dongle (key) before continuing.



A USB unlock key is supplied upon purchase of the **AudioStar** software. It is required to run the software without limitations. If you have an **AudioStar** USB unlock key, install it into an empty USB Port now before continuing.



**USB UNLOCK
KEY**



USB PORT

Once the dongle is installed, click on “Next” to continue. If you do not have a dongle, just click “Next”, and **AudioStar** will run in ‘Demo’ mode.

Once the installation is complete, you can then choose to launch the AudioStar application upon exiting the installation procedure.



Click “Finish” to exit the installation procedure.

3 Controlling AudioStar

How to Control AudioStar.

3.1 AudioStar Console

The AudioStar's 'Console' or 'main' screen emulates a hardware codec and is just as simple to operate. The main console screen of the **AudioStar** software codec contains an easy to read menu display with navigational direction keys, plus VU meters, status indicators.

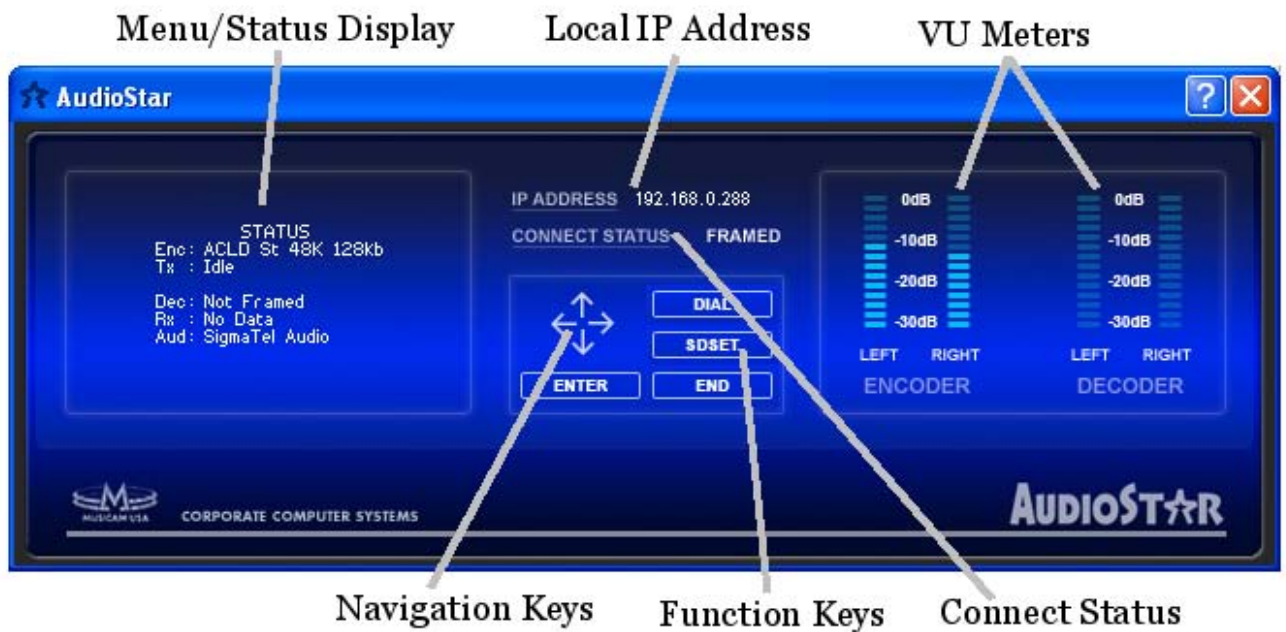


Figure 3-1 AudioStar Main Console

3.2 Menu Navigation

When AudioStar is started, the status display is shown, which looks like this:

```
          STATUS
ENC: ACLD St 48K 128kb
Tx : Idle
   :
Dec: ACLD St 48K 96kb
Rx : Idle
Aud: Audio Device
```

Main Status screen

The first of four status screens is the 'home' screen, and shows the configuration and connection status of the **NetStar**. When in a menu screen, if no entries are made for a period of time, the display will revert to this screen.

When controlling the **NetStar** from the front panel, all configurations are performed using simple menus.

3.3 Navigation Keypad





Navigation Keypad



The five button navigation keypad, shown above is used for menu navigation and configuring **AudioStar**. The directional arrow keys and the Enter key on your keyboard can also be used for navigation. When the Status screen is displayed, pressing any key will evoke the **MAIN MENU**, as shown here:



```
          MAIN MENU
1. Set Mode
2. Connect
3. View Status
4. Configure
5. System
```




Main Menu Screen




Once in the MAIN MENU, or any other menu, the navigation buttons work as follows:

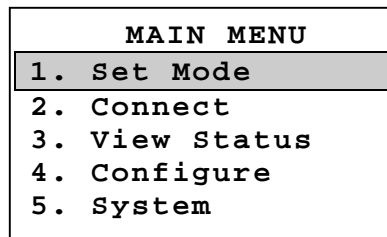
- Up : Moves the cursor (the highlighted item) to the next higher position. If the cursor is already at the top position, it will wrap-around to the bottom position. In the example screen shown above, pressing the  button moves the cursor, currently at 1. Set Mode, to position 5. **System**.

Down : Moves the cursor (the highlighted item) to the next lower position. If the cursor is already at the bottom position, it will wrap-around to the top position. In the example screen shown above, pressing the  button moves the cursor to position **2. Connect**.

Previous : Goes to the previous menu screen. For example, pressing the  button from the MAIN MENU will go back to the **MAIN STATUS SCREEN**.

Next : Moves to the next menu level or accepts the current value. In many cases, this button functions exactly like the  button. In the example below, with **1. Set Mode** highlighted, pressing the  button goes to the next menu level, the **MODE MENU**.

Enter : Pressing this button accepts the current value as highlighted or evokes the next menu level. In many cases, this button functions exactly like the  button. In the example below, with **1. Set Mode** highlighted, pressing the  button goes to the next menu level, the **MODE MENU**.






Main Menu Screen

3.4 Quick Keys



Quick Keys

- : Pressing this key takes you directly to the **DIAL** menu.
- : Pressing this key takes you directly to the **END CONNECTION** menu.
- : Pressing this key takes you directly to the **Create Profile** menu.

3.5 VU Meters



VU Meters

There are four VU meters which monitor both left and right channels of encoded and decoded audio.

4 Setup and Test

4.1 Basic console control Functions

The following basic console operations will help you navigate through the AudioStar functions. The complete keypad functions are described in Chapter 3 of this guide.

From the **STATUS** screen, press the **ENTER** button to go to the **MAIN MENU** screen. Once in the **MENU** screen, press the **ARROW** buttons to navigate to the desired selection and press the **ENTER** button to select it.

Once in the **MENU** screen, press the desired 1-9 number button on your keyboard,(not the number pad), to directly go to the desired numbered selection.

From any screen, press the **STAT (S)** button to go to the **STATUS** screen.

Press the **STAT (S)** button multiple times to toggle between the **STATUS** and the **MAIN MENU** screens.

Press the **ESC** button to go back to the previous screen. Multiple **ESC** button presses will take you to the **MAIN MENU** screen.

Press the **DIAL (D)** button to directly go to the **CONNECT** screen.

Once connected to another location, press the **END (E)** button to directly go to the **HANG UP MENU** screen.

Press the **SDSET** button to go to the **Create Profile** screen.

4.2 Setup TCP/IP settings

Before **AudioStar** can connect over IP, you must configure your PC for connection to a LAN (network), specifically the IP Address. To configure TCP/IP settings in Windows XP:

1. Open **Network Connections**—on the taskbar, click Start, select Control Panel, select **Network and Internet Connections**, and then select **Network Connections**.
2. Click the connection you want to configure, and then, under **Network Tasks**, click **Change settings** of this connection.
3. Do one of the following:
 - If the connection is a local area connection, on the General tab, under This connection uses the following items, click Internet Protocol (TCP/IP), and then click Properties.

- If you want IP settings to be assigned automatically, click Obtain an IP address automatically, and then click OK.
- If you want to specify an IP address or a DNS server address, do the following:
- Click Use the following IP address, and in IP address, type the IP address.
- Click Use the following DNS server addresses, and in Preferred DNS server and Alternate DNS server, type the addresses of the primary and secondary DNS servers.

4. To configure DNS, WINS, and IP Settings, click Advanced.

4.3 Setup Audio Input Source

The following basic front panel keypad functions will help you navigate through the AudioStar functions.

Under **Main Menu**, select item #4-'Configure', and hit **ENTER**.

Select item #2-'Setup Audio', and hit **ENTER**.

Select item #1-'Audio Input Setup', and hit **ENTER**.

Select item #1-'Source', and hit **ENTER**.

Highlight desired source, and hit **ENTER**.

4.4 Setup Audio Output Source

Under **Main Menu**, select item #4-'Configure', and hit **ENTER**.

Select item #2-'Setup Audio', and hit **ENTER**.

Select item #2-'Audio Output Setup', and hit **ENTER**.

Select item #1-'Source', and hit **ENTER**.

Highlight desired source, and hit **ENTER**.

The complete keypad functions are described in Chapter 3 of this guide.

4.5 Test the AudioStar

Once you've configured the AudioStar and you've connected speakers and an input audio source to the AudioStar you can test it as follows:

4.5.1 Loopback Test

From the **STATUS** screen, press **ENTER** to go to the **MAIN MENU** screen.

Press 1 to select **Set Mode** and go to the **MODE MENU** screen.

Press 2 to select **Set Receive** and go to the **Receive Options** screen.

Press 1 to select **Loopback**.

Use the **DOWN ARROW** to select Yes and press **ENTER**.

At this point you should hear audio out of the speakers if audio is present at the audio input connectors.

During the loopback test you can go to the **Set Mode, Set Encoder** section and select different encoder algorithms for testing. Remember, when using the web control method, to click on Apply changes after making any changes to Encoder settings.

4.5.2 Connect AudioStar to AudioStar via IP

This test assumes that:

You've configured a PC running AudioStar following previous sections of this Quick Start Guide.

Two PCs running **AudioStar** are configured and properly connected to a LAN. Please refer to the previous sections of this guide to properly configure and connect the **AudioStar** units to your LAN.

4.5.2.1 IP Connection Test Setup:

At the sending (encoding) **PC**, connect an audio source to the sound card audio inputs.

At the receiving (decoding) **PC**, connect an amplifier and speakers to the sound card audio outputs.

4.5.2.2 Test IP Connections

On the Receiving end, press **ENTER** to go to the **MAIN MENU** screen.

Press 1 to select **Set Mode** and go to the **MODE MENU** screen.

Press 2 to select **Set Receive** and go to the **Receive Options** screen.

Press 5 until **Accept IP** is set to **Yes**

Press 6 to select **IP Rx Port**, and set to **5000** (Default)

On the sending **AudioStar**, press **ENTER** to go to the **MAIN MENU** screen.

Press 1 to select **Set Mode** and go to the **MODE MENU** screen.

Press 2 to select **Set Receive** and go to the **Receive Options** screen.

Press 1 to select **Loopback**.

Use the **DOWN ARROW** to select **No** and press **ENTER**.

From the sending **AudioStar** press **DIAL(D)** to take you to the **CONNECT MENU**.

Press 1 to select **Direct Connect**.

Press 1 to select **Transmit IP**.

Press 1 to select **IP**, and enter the **IP address** of the receiving **AudioStar** and press **ENTER**.

Press 2 to select **Port**, and the desired **IP Port Number** (5000 by Default).

Press 3 to select **Transmit Now**, and audio should now be present at the receiving **AudioStar**.

Test variations you may want to try:

While transmitting, you can modify the encoding algorithm under the "**Set Mode, Set Encoder**" menu. You can use both PC's running **AudioStar** in full bi-directional mode using different algorithm settings for each direction.

Index

A

Audio Input Source, 13, 14
Audio Output Source, 14

C

Connect, 15
Connections
 Audio Connections, 2
 IP Connections, 2

D

Demo mode, 7
Direct Sound™, 2
dongle, 7

I

Installing AudioStar, 3
IP address
 DNS server, 14
 IP address, 13

L

LAN interface, 2
Loopback Test, 14

M

Menu Navigation, 10

P

Purchased copy
 USB unlock key, 7

S

sound card, 2, 15

T

Test, 14
 IP Connection, 15
 Loopback Test, 14

U

USB Port, 7