



# Users Guide



**MUSICAM USA**

Corporate Computer Systems, Inc. d/b/a MUSICAM USA

---

MUSICAM USA

---

 *RoadRunner*<sup>™</sup> Users Guide for  
Software Revision 1.15

---

© MUSICAM USA  
Corporate Computer Systems, Inc.  
670 North Beers Street, Building 4  
Holmdel, NJ 07733 USA  
Phone (732) 739-5600 • Fax (732) 739-1818  
<http://www.musicamusa.com>

First Printing: November, 1999

MUSICAM USA Part Number 605500M

# Table of Contents

		Service Provider ID (SPID) Number (North America Only)	19
		Identification (ID) Number (North America Only)	19
		Multiple Subscriber Number (MSN/LDN — Europe Only)	20
		Local Check (North America Only)	20
		LLC State	20
		Sub Address, EAZ (Germany) And Interface Mode	20
		Inband	21
		Reset	21
		Terminal Adapter TA201 and TA301 Configuration for North America	22
		Selecting Country and Switch Type	22
		Service Provider ID (SPID) Number	23
		Identification (ID) Number	23
		LLC	23
		Reset	24
		Terminal Adapter TA201 Configuration, Non-North American Operation	24
		Selecting Country and Switch Type	24
		LDN / MSN Number	24
		LLC (Low Level Command) State (UK Only)	25
		Sub-Address and Interface Mode	25
		Reset	25
		Other TA Parameters — Auto Answer, Auto Reconnect, Dial Time Out and Redial Attempts	26
		Terminal Adapter TA201/TA301 Software Version	27
		Using TA Configuration Memory	27
		Saving Current TA Configuration	27
		Loading Stored Configurations	27
		Stored Configuration Table Maintenance	28
		Audio I/O and Level Adjustments	28
		Audio Output Muting	29
		Loopback Testing	29
		Encoder and Decoder Configuration	30
		Quick Setup	32
		Quick Status	32
		Advanced Encoder and Decoder Configuration	33
Introduction	1		
Key Features	3		
CODEC Compression Algorithms	4		
ISO/MPEG Layer III	4		
MUSICAM and ISO/MPEG Layer II	4		
G.722	5		
Broadcast Capabilities	5		
Unpacking and Installing	6		
<b>RoadRunner</b> Connections	6		
<b>RoadRunner</b> Overview	8		
Front Panel Connectors and Controls	8		
Rear Panel Controls and Connectors	9		
Digital Interface Module	11		
Installing the Digital Interface Module	11		
RS422/RS449 and X.21 Using the DIF101 Digital Interface	11		
V.35 Using the DIF102 Digital Interface	12		
ISDN Using the TA101 Terminal Adapter	13		
ISDN Using the TA201 Terminal Adapter	13		
ISDN Using the TA301 Terminal Adapter	13		
Using <b>RoadRunner</b>	14		
Menu Navigation Using the Keypad and Display	14		
Selecting A Digital Interface Module (DIF)	16		
TA Configuration	16		
Terminal Adapter TA101 Configuration	17		
Switch Type (North America and Germany Only)	18		

Advanced Encoder Configuration	33	Control Problems	54
Decoder Configuration	34	Appendix A — DIF Pin Out	55
Broadcasting	36	DIF 101—X.21 / RS449	55
Speed Dial and Quick Configuration directory	36	DIF 102—V.35	55
Pre-Programmed Quick Configurations	36	Appendix B — Rear Panel Pin Outs	56
Creating Quick Configurations and Speed Dial Entries	39	Relay outputs and opto-inputs (future):	56
Deleting and Editing Quick Configurations	39	Remote Control / Software Upgrade:	56
Speed Dialing and Using Quick Configurations	40	Appendix C — ISDN Ordering and Provisioning	57
Manual Dialing	40	North American ISDN Ordering	57
Call Termination	41	Contacts	57
Advanced Features	41	North American ISDN Provisioning	57
Remote Control	41	<i>FAX-PAGE 1</i>	58
Software Maintenance and Upgrading	42	AT&T 5ESS Custom	58
Hot Keys	43	<i>FAX-PAGE 2</i>	59
Rebooting and Resetting Factory Defaults	43	AT&T 5ESS - National ISDN 1	59
Keypad Beeper and Display Brightness	44	<i>FAX-PAGE 3</i>	60
Troubleshooting	45	AT&T 5ESS — Custom	60
Audio Problems	45	AT&T 5ESS — National ISDN	60
No Audio in Loopback	45	Northern Telecom DMS-100 BC-35	61
No Audio when Connected to Another Codec	46	National ISDN 1	61
Connection Problems (ISDN)	48	<i>FAX-PAGE 4</i>	61
Connection Problems (Non-ISDN)	50	<i>FAX-PAGE 5</i>	62
TA101 Setup	51	Northern Telecom DMS-100 BC-35	62
TA201 / TA301 Setup	53	National ISDN 1	62
		Appendix D — Menu Tree – ISDN Operation	63
		Appendix E — Warranty	64

## Introduction

**R**oadRunner from MUSICAM USA contains the latest in technologies to bring you the best possible combination of features and performance available from any portable codec. Inside its rugged but lightweight enclosure, the **RoadRunner** contains a full-featured monaural audio mixer with two microphone inputs and a third input switchable between microphone and line levels. The analog audio section also contains a wide array of outputs: two individually adjustable headphone outputs, plus two unbalanced and one balanced line level output.

**RoadRunner's** digital section contains the widest selection of compression algorithms available in any portable codec. **RoadRunner's** premier coding algorithm is MUSICAM, MUSICAM USA's fully compatible enhancement to the ISO/MPEG Layer II encoding standard. Industry standard ISO/MPEG Layer III as well as G.722 are also included. **RoadRunner** can send and receive up to 20 kHz monaural audio transparently over digital transmission systems and is compatible with more codecs than any other similar device. **RoadRunner** can send the same audio program to two locations simultaneously. **RoadRunner** also contains ample memory to support upgrades to its algorithm suite and operating system as developments and improvements occur. You can even make software upgrades in the field, without having to return the **RoadRunner** to the factory.

**RoadRunner** offers more connection options than any other portable codec. With a plug-in ISDN terminal adapter (**RoadRunner's** standard configuration), **RoadRunner** can connect directly to another ISDN codec at bit rates from 56 to 128 kb/s. **RoadRunner** also accepts any of the digital interface modules available from MUSICAM USA, and can be used over any digital facility that accepts V.35, X.21 or RS422 interfaces, in addition to ISDN.

**RoadRunner's** built-in auto-dialer can be used to make all connections when using any one of MUSICAM USA's available ISDN terminal

adapters. **RoadRunner**'s speed dial directory holds up to 256 entries. Each entry not only holds the numbers to dial, but also all configuration and connection information, making the **RoadRunner** easy to use with any connection type.

## Key Features

**R**oadRunner is a complete package. It is housed in a rugged case and includes a foldaway handle. The complete **RoadRunner** package weighs less than 9.5 pounds (4.3 kg). Inside the **RoadRunner** case is a full featured 3-channel monaural audio mixer, an 18-bit A-to-D converter, a multi-algorithm codec, a slot for available plug-in digital interface device (an ISDN terminal adapter is supplied as standard), an auto-dialer, international AC and DC power supplies, and a powerful command processor. If you choose, you can connect your **RoadRunner** to any digital transmission system through available X.21, V.35 or RS422 digital interface modules.

**RoadRunner** uses state-of-the-art compression technologies to provide bi-directional broadcast quality monaural audio over a single 56 or 64 kb/s line. In addition, the **RoadRunner** can provide bi-directional 20 kHz monaural audio transparently over a single ISDN line at 112 or 128 kb/s.

**RoadRunner** is easy to use. The **RoadRunner** front panel controls have been kept to a minimum, are simple to use, and are clearly labeled. The front panel controls include mixing levels for three inputs (two microphone and one switchable mic/line) and individual local and return level adjustments for two separate headphone outputs.

All audio connections are made through industry standard connectors, logically located on the front and rear panels. Two balanced XLR microphone inputs are located on the front panel, as are two standard ¼" headphone jacks. An additional balanced input, switchable between microphone and line levels, is located on the rear panel. Also on the rear panel is an XLR balanced line level output and two ¼" unbalanced local and return audio outputs, ideal for PA feeds, recording, etc.

The **RoadRunner** can be equipped with any of the Digital Interface Modules available from MUSICAM USA. Available modules include

internal Terminal Adapters (with or without built-in NT-1), V.35, X.21 or RS422.

Front panel indicators include Power, On line, Norm (signal level) and Clip (over level). There are also four Cue LEDs indicating the state of the internal relays.<sup>1</sup> The front panel keypad can be used to access all functions of the **RoadRunner** and built in Terminal Adapter, and is also used as the dial keypad. A backlit display with adjustable contrast provides menu, maintenance and dialing displays.

Since **RoadRunner** features and audio quality are implemented in software, rather than hardware, the **RoadRunner** can be upgraded in the field should improvements become available. Software can be downloaded directly from our Web Site ([www.musicamusa.com](http://www.musicamusa.com)) or we can send you an upgrade kit. This prevents your **RoadRunner** from becoming obsolete.

## CODEC Compression Algorithms

There are currently three coding algorithms used in the **RoadRunner**. Each has its advantages and disadvantages. Which algorithm you use depends on a number of factors, including desired audio quality, delay and compatibility with other codecs.

### ISO/MPEG Layer III

ISO/MPEG Layer III can provide full duplex, 15 kHz audio using only one 56 or 64 kb/s ISDN 'B' channel. When using 112 or 128 kb/s, transparent 20 kHz audio is possible. The inherent drawbacks of this algorithm are the long coding delay times and poor cascading characteristics. In addition, post processing may highlight some artifacts.

### MUSICAM and ISO/MPEG Layer II

The premier coding algorithm used in **RoadRunner** is MUSICAM, MUSICAM USA's encoding enhancement to the ISO MPEG Layer II

---

<sup>1</sup> Relays and optical inputs have not been activated in this release, but will be activated in future software releases.

algorithm. MUSICAM encoding is fully compatible with all MPEG Layer II decoders, and since the enhancements area part of the encoder, any Layer II decoder will sound better when connected to a **RoadRunner**. MUSICAM can deliver full duplex, 10.5 kHz audio on one ISDN 'B' channel. When using 112 or 128 kb/s, transparent 20 kHz audio is possible. Although a narrower bandwidth at 56 and 64 kb/s than MPEG Layer III, audible advantages are higher transparency, lower delay, less noticeable artifacts and better results when cascading. At 112 and 128 kb/s, MUSICAM offers transparent monaural audio and better cascading than either standard ISO/MPEG Layer II or Layer III.

## G.722

G.722 is one of the earliest audio coding algorithms to be standardized. G.722 is a relatively simple algorithm based on ADPCM (Adaptive Predictive Pulse Code Modulation) offering full duplex, 7.5 kHz audio over a single 'B' channel. The essential advantages of G.722 are its compatibility with most other codecs and very low delay times. The main disadvantages are its limited audio fidelity, poor signal-to-noise ratio and poor cascading.

## Broadcast Capabilities

The **RoadRunner** can be configured to send the same audio program to two different locations simultaneously. In addition, the **RoadRunner's** decoder can receive the return audio from both locations, and you can easily switch to monitor the return audio from either location.

You can use any supported algorithm, and can even use different algorithms for the send and return audio. For example, high quality Layer III audio can be sent to the studio from the remote location, but low delay G.722 can be used for the return audio.

## Unpacking and Installing

**Y**our **RoadRunner** comes with an AC line cord and an RJ-45 jumper cable if an ISDN terminal adapter is installed. An appropriate interface cable, available from MUSICAM USA, may be required if a non-TA module is installed. An optional carrying case is available.

Unpack your **RoadRunner** and plug it in to an appropriate power source. Please note that the **RoadRunner** has a “World” AC and DC power supplies, and can be used anywhere without changing voltage settings. **RoadRunner** can operate in any position, and may be stacked or shelf mounted if desired. However, note that **RoadRunner** is fan cooled, and the rear mounted fan should not be blocked.

Your **RoadRunner** is shipped to you in Loopback Mode. When in this mode, you can test all audio input and output connections. When your **RoadRunner** is in the loopback mode, and all audio connections have been made properly, you should hear any audio input to the **RoadRunner** at the output of the **RoadRunner**. Please remember that for normal operation, the **RoadRunner** must *not* be in loopback mode.

## **RoadRunner** Connections

**RoadRunner**'s connection to the digital transmission medium is made through a Digital Interface Module (DIF). The **RoadRunner** supports one digital interface module that plugs into a slot in the rear panel. Two types of DIFs are available, Terminal Adapter (TA) and non-TA. TAs connect directly to your ISDN line and allow dialing directly from the **RoadRunner** keypad. Non-TA type modules can connect to external terminal adapters or most other digital facilities, such as dedicated lines, fractional T1 or satellite systems through appropriate interfaces.

MUSICAM USA offers three different TA modules, the TA101, TA201 and TA301. The TA101 and TA201 both provide an 'S/T' interface and require an external network interface device (NT-1) for use in North America. Elsewhere, the NT-1 is provided by the phone company, and an external NT-1 is not required. The TA301 provides a 'U' interface through its built-in NT-1 and therefore can be used only in North America.

Connect the ISDN line to your internal terminal adapter (if so equipped). Be sure that there are no alarm conditions present on the terminal adapters or the NT-1. There should be no flashing LEDs or other alarm indications for proper operation. The TA201 and TA301 terminal adapters have sanity LEDs that can be observed from the back of the **RoadRunner**. The green LED must be solid ON for proper operation. If using an external NT-1 with your terminal adapter, the 'U' interface (the wall connector) requires a 2-conductor cable. The 'S/T' interface (the **RoadRunner** side) requires an 8-conductor cable.

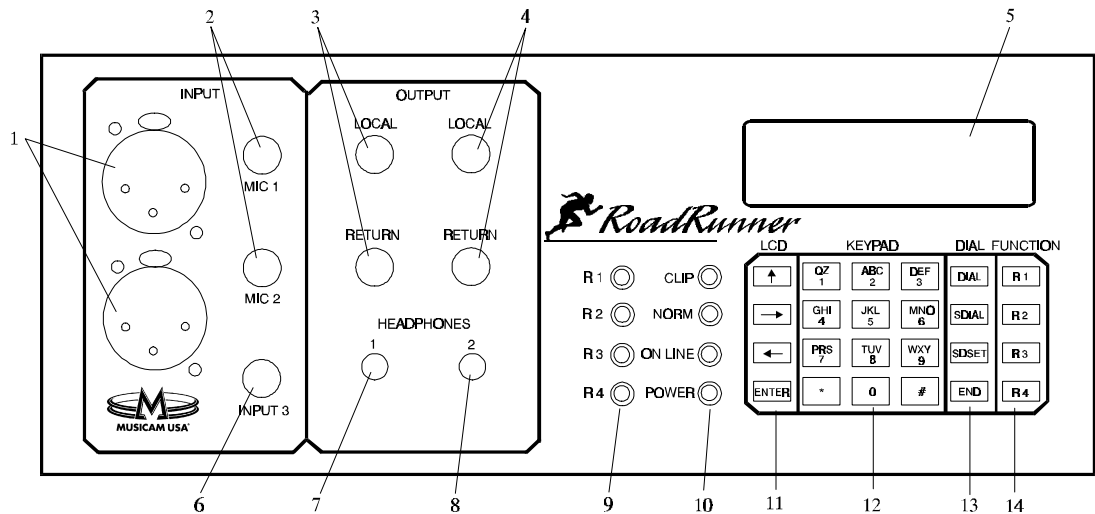
Two non-TA digital interfaces are also available for the **RoadRunner**. The DIF101 interface is used for connecting transmission systems using X.21, RS422 or RS449 interfaces. The DIF102 interface connects to transmission systems using the V.35 protocol.

All audio input and output is through industry standard connectors located on the front and rear panels. Two balanced XLR microphone inputs are located on the front panel as are two standard ¼" headphone jacks. An additional balanced input, switchable between microphone and line levels, is located on the rear panel. Also on the rear panel is an XLR balanced line level output for received audio from the far end unit and two ¼" unbalanced local and return audio outputs to feed recorders, PA systems, etc.

The four relay outputs (future) and optically isolated inputs (future) are accessed through the DB-25 connector, and there is a DB-9 connector for remote control and software upgrades. Connectors for AC power (100-240 VAC, 50/60 Hz) and 12 VDC power are also located on the rear panel, as is the power switch and fuse.

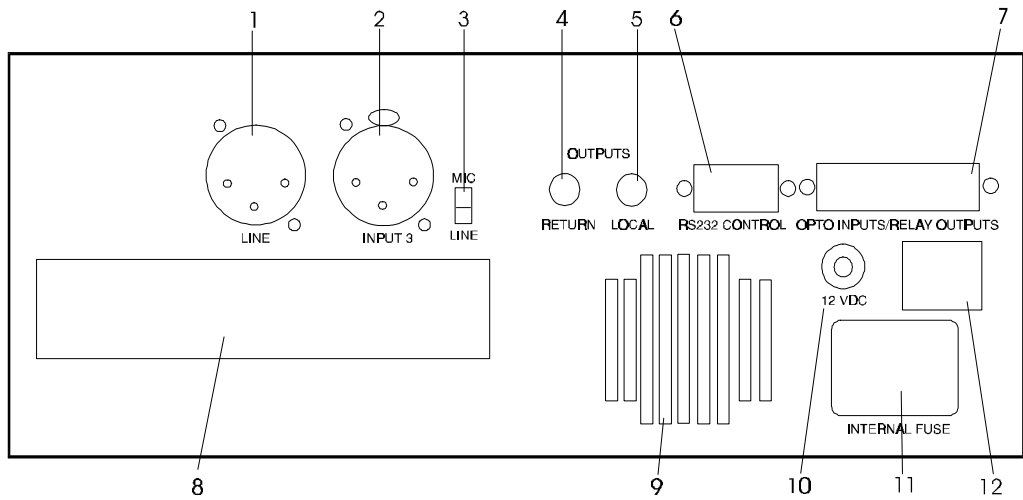
## RoadRunner Overview

### Front Panel Connectors and Controls



1	MICROPHONE INPUTS	Two balanced microphone inputs
2	MICROPHONE INPUT LEVEL CONTROLS	Adjusts level and mix for two microphone inputs
3	HEADPHONE 1 LEVEL CONTROLS	Adjusts send & return levels for headphone 1
4	HEADPHONE 2 LEVEL CONTROLS	Adjusts send & return levels for headphone 2
5	BACK-LIT LCD DISPLAY	Displays all control functions and modes
6	INPUT 3 LEVEL CONTROL	Adjusts level of mic/line input 3
7	HEADPHONE 1 OUTPUT	1/4" Headphone output
8	HEADPHONE 2 OUTPUT	1/4" Headphone output
9	RELAY STATUS INDICATORS	LED relay and cue status indicators
10	STATUS INDICATORS	LED RoadRunner status indicators
11	NAVIGATION KEYS	LCD Menu navigation keypad
12	ALPHANUMERIC KEYPAD	Configuration and dialing keypad
13	DIAL KEYS	Controls all dialing functions and directory maintenance
14	FUNCTION KEYS	Hot keys for one-button functions

## Rear Panel Controls and Connectors



1	LINE OUTPUT	Balanced, fixed line level return audio output
2	INPUT 3	Microphone or line input 3
3	INPUT SELECTOR	Microphone or line level select for input 3
4	UNBALANCED RETURN AUDIO OUTPUT	Unbalanced line level return audio output
5	UNBALANCED LOCAL AUDIO OUTPUT	Unbalanced line level local audio output
6	RS232 CONTROL	DB-9 connector for remote control and software upgrades
7	RELAY OUTPUTS	DB-25 connector for contact closure I/O (future)
8	DIF SOCKET	Slot for digital interface module or ISDN terminal adapter
9	FAN	Cooling fan for reliable operation
10	DC POWER INPUT	Input for DC power
11	POWER CONNECTOR	AC Mains power connector
12	POWER SWITCH	Power switch

With certain external phantom power supplies it may be necessary to lift the ground lead (shield) from one side of the cable.

You can connect a professional quality low impedance microphone directly to either XLR microphone input on the front panel. A microphone can also be connected to the mic/line input on the rear panel, setting the level switch accordingly. High impedance microphones, or microphones with other than XLR connectors must use an external matching transformer or adapter. Phantom power is not provided. Balanced monaural line level audio is input through the XLR

Input 3 connector on the rear panel, setting the input level switch accordingly.

Mic/Line mixing is accomplished using the three input level controls located on the front panel. When audio is present, adjust the levels so that the green 'NORM' indicator illuminates and the red 'CLIP' indicator does not. It is recommended that the input level be turned down if an input is not connected.

Two sets of headphones with ¼" jacks can be used without adapters. When stereo headphones are used, the output will be monaural, to both ears. **Do not use monaural headphones with 2-conductor plugs.** The audio source to the headphones, local or return audio, is adjusted using the two monitor level controls located above each headphone output. Level adjustments for each headphone are independent.

Balanced Line level return audio (audio from the far-end) is available through an XLR connector, and unbalanced line level local and return audio is available through two ¼" phone jacks. All output levels are fixed at 0 dBu relative to input levels (no insertion gain/loss).

A 9-pin connector for remote control and software maintenance is included, as is a 25-pin connector for the four optically isolated inputs and relay outputs (future). In addition, one slot can hold any of the plug-in digital interface modules available from MUSICAM USA. Available modules include ISDN TAs, RS422, X.21, and V.35 interfaces. Although primarily an ISDN device, you can also use the **RoadRunner** with other digital transmission systems, such as Switched-56, dedicated lines, fractional T-1 and satellite systems using the appropriate digital interface module.

The **RoadRunner** can be used with 12 VDC or AC power. The universal AC power supply needs no jumpers, and works with 94 - 250 VAC, 50 or 60 Hz. Please note that the **RoadRunner** does require forced-air cooling, and that the rear mounted cooling fan should not be blocked.

The **RoadRunner** has a rich set of remote control commands that allow you to control it from an attached terminal or computer. A separate **RoadRunner Remote Control Manual** is available from MUSICAM USA upon request.

## Digital Interface Module

**Y**ou can skip this chapter if your digital interface module or terminal adapter has been factory installed.

### Installing the Digital Interface Module

A digital interface module is required to use your **RoadRunner** with a transmission system. Only one DIF module can be installed in the **RoadRunner** at a time. If you are using a DIF101 or DIF102 module for RS422, X.21 or V.35 interfaces use the appropriate cables, available from MUSICAM USA.

All DIFs are installed in the slot in the rear of the **RoadRunner**. You should make certain that the module is installed correctly, not forced and has been securely fastened using the provided screws. You should not attempt to operate the **RoadRunner** if the DIF has not been properly installed and secured.

Once installed, the DIF module and interface type must be selected on the **RoadRunner** menu for proper operation:

```
<Maint><Dig I/F><Type>
```

#### RS422/RS449 and X.21 Using the DIF101 Digital Interface

The RS422 interface specification defines only the electrical voltages at the interface and leaves the pin-out and meaning of the pins to the hardware designer. The RS449 interface specification utilizes the electrical specifications of RS422 but specifies a mechanical connector. RS449 equipment is therefore electrically compatible with the **RoadRunner** RS422 interface when an appropriate adapter cable is used. RS449 also specifies numerous control signals besides clock and data, which are not used by the **RoadRunner**. The **RoadRunner** RS422 interface pin-out is specified in Appendix A.

The RS422 interface also has a separate clock for the transmitted and received data. The RS422 interface can also echo the transmitter clock. If the terminal equipment clocks the encoder data with the echoed clock, the **RoadRunner** may be located up to 4000 feet (1219 meters) from the terminal equipment without concern for encoder-to-clock skew.

The X.21 interface specification is, in general, a very complex specification. The general specification allows a mechanism for communication between the customer equipment and the network. This communication path can be used for things such as dialing. A subset of the specification, called the leased circuit, used here, restricts the interconnection to only clock and data and a very simple control signal. The mechanical connector required is the DB15 with the pin-out specified in Appendix A. The electrical specification for X.21 is identical to those of RS422. The X.21 interface has only one clock for both transmit and receive signals.

Since the X.21 uses the RS422 electrical interface, the **RoadRunner** can use the same connector for both interfaces. In the case of the X.21 interface, the single clock is used internally for both transmit and receive timing. To change the hardware configuration of the DIF101 interface card between X.21 and RS422/RS449, change the position of jumper J4 on the interface module. The jumper on positions 1 and 2 sets X.21 operation, and when on positions 2 and 3, the card is set for RS422/RS449 operation.

### V.35 Using the DIF102 Digital Interface

Each interface defines a voltage level for each of the signals. In the case of V.35 and X.21, a connector type is defined as well. The large, rectangular block connector defined in the V.35 specification is not used by the **RoadRunner** because of its size. Instead, a smaller DB15 connector is used. In the case of the V.35 interface, the **RoadRunner** conforms to the electrical specification but requires an adapter cable to convert the DB15 connector to the connector specified in the V.35 specification. The connector and the pin-out chosen for the V.35 interface in the **RoadRunner** are a common deviant found in many systems. An adapter cable is available from MUSICAM USA or distributors, or can be made following the diagram found in Appendix B. It is important to remember that V.35 has a separate clock for transmitted and received data.

### ISDN Using the TA101 Terminal Adapter

The TA101 Terminal Adapter plugs directly into the **RoadRunner** and provides an 'S/T' interface to ISDN. The S/T interface requires an NT-1, which must be provided by the user for North American operation. Elsewhere, the service provider supplies the NT-1.

Since every country requires slightly different ISDN control and signaling information, the TA101 TA requires different ROM chips for different countries. If you have specified the country in which you will be using the **RoadRunner** when ordering, your TA101 will have the correct ROM chip installed. Please check with your local distributor, CCS Europe or MUSICAM USA if you will be taking your **RoadRunner** to foreign countries. Configuring the TA101 is discussed in later sections.

### ISDN Using the TA201 Terminal Adapter

The TA201 Terminal Adapter plugs directly into the **RoadRunner** and provides an 'S/T' interface to ISDN. The S/T interface requires an NT-1, which must be provided by the user for North American operation. Elsewhere, the service provider supplies the NT-1.

The TA201 is pre-programmed with the ISDN configurations for all countries, and can be used everywhere without the need for changing ROM chips. Country selection is made in from the **RoadRunner's** menu, and will be discussed later.

### ISDN Using the TA301 Terminal Adapter

The TA301 Terminal Adapter contains a built-in NT-1, providing a 'U' interface. Since outside North America, the NT-1 is supplied by the provider, and the network provides the 'S/T' interface, the TA301 can be used only in North America. Configuring the TA301 will be discussed later.

## Using *RoadRunner*

**A**fter applying power to the RoadRunner, a boot sequence executes for approximately 30 seconds. This boot sequence initializes the DIF, digital signal processors, and control processor. After the boot sequence completes, the LCD display should look like this:

```
RoadRunner    1.15
[Status]     Operati
```

If a Terminal Adapter is installed in the *RoadRunner*, the ON LINE lamp may come on during the boot sequences but should extinguish upon completion. If the ON LINE lamp stays on after the boot sequence completes (when equipped with an internal terminal adapter), re-boot the unit by turning the power off and on again. If a V.35 or X.21 interface is used, and an external TA (V35XTA or X.21XTA) is not selected, the ON LINE lamp will remain illuminated.

The *RoadRunner* is fully configured and controlled using the built-in keypad and display. In addition, a full set of remote control commands is included so that your *RoadRunner* can be operated from a PC or terminal. The following sections discuss configuration and programming using the internal keypad. The remote control commands required for each operation are not included in this Users Guide. Complete remote control command syntax and options for each command is found in the *RoadRunner Remote Control Manual*, available upon request from MUSICAM USA or on-line at [www.musicamusa.com](http://www.musicamusa.com).

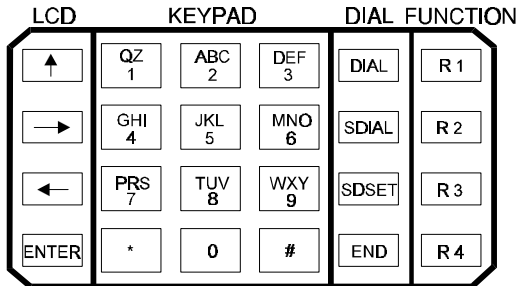
## Menu Navigation Using the Keypad and Display

All *RoadRunner* functions can be accessed using the soft-touch keypad and LCD display.

The following discussion of menu navigation is based on the basic keypad and display as shown in the following figure. The top line of the display is for information and prompts. The bottom line is for menu choice selection and information entry.



To use the keypad and display, press the arrow keys to move the cursor (the [ ] brackets) to the desired menu selection. Press the **ENTER** key to execute the selection or move down to the next menu level. Pressing the (up arrow) at any time brings you up one menu level. At any given time, only a limited number of selections may be visible on the display. By using the and (left and right) arrow keys, the display can be scrolled to show all possible options and selections.



The left and right arrow keys, the display can be scrolled to show all possible options and selections.

The alphanumeric portion of the keypad is used for entering information and for dialing. Each of the 12 keys associated with the alphanumeric portion of the keypad represent up to four different characters. Multiple presses of the same key select different characters.

**! note:**

**Please note: the QZ1 key is also the space key. Spaces are *not* entered using multiple presses of the right-arrow key.**

The left and right arrow keys are used in conjunction with the alphanumeric keys to move the cursor to the desired position. After the desired character string has been formed, pressing the **ENTER** key executes or enters the string.

In the discussions that follow, the printed sequence <X><Y><Z> will be used as shorthand to mean: Use the arrow keys to move the cursor to 'X' and press **ENTER**, then use the arrow keys to scroll to 'Y' and press **ENTER**, finally, scroll to 'Z' and press **ENTER**.

The keys under the 'DIAL' label are used to enter and execute dialing functions such as direct dialing, speed dialing, directory maintenance and call termination. The last column of keys are 'Hot' keys. Pressing

any one of these keys will execute one of the pre-programmed or user programmed one-button functions.

**!**note:

## Selecting A Digital Interface Module (DIF)

If the DIF was not factory installed, or if you change DIFs, you need to select the Digital Interface the first time you use the **RoadRunner** with that DIF.

Once a DIF has been physically installed, you must set the **RoadRunner** to recognize the module. From the keypad, use the sequence:

<Maint><Dig I/F><Type><Type>

and scroll through the menu to select the installed interface. The choices are:

TA101, TA201, TA301, X.21, X.21XTA, V.35, V.35XTA and RS422.

Select the appropriate interface and press **ENTER**. You can also use the remote control command **CIF** from a terminal or computer. Select V.35XTA or X.21XTA only if your external TA is capable of recognizing DTR or CON signals for call termination. This allows you to terminate a connection from the front panel of the **RoadRunner**. You can also toggle the sense of the DTR line using the

<DIFx01><DTR/CON>

sequence. If your external TA cannot recognize these signals, then select V.35 or X.21.

## TA Configuration

**!**note:

**It is necessary to configure a Terminal Adapter each time you connect your *RoadRunner* to a different ISDN circuit.**

Three different TAs are available for use in the **RoadRunner**. All must be configured properly for use with ISDN, and all require the user to have certain information, supplied by the ISDN service provider. The following information must be known before configuring any TA for use:

North America:

- Switch Type (National ISDN-1 or Custom)
- Switch software version if switch type is Custom

- Switch manufacturer if type is National (for TA101 only)
- SPID numbers for each ISDN 'B' channel

Elsewhere:

- Switch type (if required)
- ETSI version
- Sub address (if required)

For TA201 and TA301, skip to page 22 for North America, page 24 elsewhere.

### Terminal Adapter TA101 Configuration

The TA101 terminal adapter provides one 'S/T' interface for one ISDN BRI (2 x 64 kb/s) line. In North America, the Telco provides a 'U' interface; therefore, an external NT-1 must be used between the **RoadRunner** and the wall jack. Elsewhere, the Telco provides an 'S/T' interface and an external NT-1 is not needed.

**!**note:

**The TA101 requires country specific ROM chips for use in different countries. Please contact MUSICAM USA, CCS-Europe or your local distributor for information if you plan to take your *RoadRunner* to a different country.**

Probably the most confusing aspect of ISDN codecs is configuring the Terminal Adapter for the ISDN in your area. This is especially true in North America, where there are several local 'flavors' of ISDN that are all provisioned differently. Elsewhere, configuration of the terminal adapter may be as simple as insuring the proper ROM chip is installed for the country where the **RoadRunner** is being used.

In North America, the ISDN service provider must supply certain information to correctly configure the TA101 Terminal adapter:

- Switch Manufacturer, e.g. AT&T, Seimens, Northern Telecom.
- ISDN 'flavor,' e.g., National ISDN or Custom Point-to-Point. **Please note that the TA101 terminal adapter will not work with AT&T Custom Point-to-Multipoint nor will it work with AT&T National ISDN software revision 5E9.1.**

**!**note:

- Service Provider Identification Numbers (SPID numbers). National ISDN *always* requires SPID numbers, some locations using Custom Point-to-Point *may* not require SPID numbers. If SPID numbers are required, most areas use two, but some implementations require only one (are you confused yet?)

### Switch Type (North America and Germany Only)

It is necessary to tell the TA101 what type of switch protocol is being used at the Telco central office. The ISDN service provider will give this information to you. You only need to set the switch type once for each TA since the switch governs both. Use the menu branch:

<TA101><Setup><Sw Type>

then select the appropriate switch type. The **CSW** command is used for setting the switch type from a terminal.

In North America, four switch types are available:

- **5E6** is used for AT&T *Custom Point-to-Point* ISDN version 5E6 or earlier. This selection is *not* used for AT&T National ISDN, regardless of version number.
- **5E8** is used for AT&T *Custom Point-to-Point* ISDN version 5E8 or later. This selection is *not* used for AT&T National ISDN, regardless of version number.
- **NTI** is used when the switch is a Northern Telecom DMS-100 switch
- **NI1** is used for all other National-ISDN-1 implementations, *including AT&T*.

German users have three choices: DSS1, 1TR6 and AUTO (AUTO will not work if a PBX is used). Contact CCS-Europe for information on which to use in your area.

**!** note:

### **Special Notes for Switch Type 5E6, 5E8 and AT&T 5E9.1 (North America Only).**

Point-to-Multipoint is not supported.

If your service provider tells you that the switch type is an AT&T 5ESS Custom Point-to-Point with software version 6 or earlier, you cannot enter a SPID and ID number since these are not supported. Since SPID and ID numbers are not entered, you must tell the **RoadRunner** not to look for them, by setting Local Check to NONE, using the menu sequence

<TA101><Setup><Lcl Chk><None>

or the **CLC** command.

If your service provider says your 5ESS switch is running software version 5E9.1 in Custom Point-to-Point configuration, they may give you SPID numbers. On the **RoadRunner**, select switch type 5E8, *do not* enter the SPID numbers, but enter the ID numbers and local check values. A TA reset may or may not result in a “SP1 BAD SP2 BAD” message. **When dialing, ‘1 + area code’ dialing is required, even for local calls.**

If your service provider says your 5ESS switch is running software version 5E9.1 in National ISDN configuration, you must contact MUSICAM USA technical support.

#### Service Provider ID (SPID) Number (North America Only)

For *most* areas in North America, the TA must be told the SPID number of the *calling* ISDN line; that is, the line connected to the **RoadRunner**. The ISDN service provider in your area provides this number. **It is important to remember that every time the RoadRunner is moved, or whenever there is a change in the ISDN line, or even area code changes, the SPID and ID number, switch type and possibly other parameters for the TA setup must be updated.** You can store up to 20 ISDN SPID and location configurations for later recall.

To set the SPID number using the keypad, go down the branch

<TA101><Setup><SPID>

select the ‘B’ channel number, 1 or 2, and enter the provided SPID number. Please note that each TA supports 2 basic rate ISDN ‘B’ channels, so if your service provider gave you two SPID numbers, you must enter both of them, one for each ‘B’ channel. Use the **CSI** command to set the SPID number from a terminal.

#### Identification (ID) Number (North America Only)

If you are required to use two SPID numbers, then you must use ID numbers. For the TA101 terminal adapter, the ID number is just the last four digits of the seven digit ISDN line number connected to the **RoadRunner**. Use the

<TA101><Setup><ID>

**!** note:

branch, and enter the ID for each 'B' channel. You can use the **CLD** command from a terminal.

#### Multiple Subscriber Number (MSN/LDN — Europe Only)

If you have selected the DSS1 switch type in Germany, then MSNs must also be used. Use the

<TA101><Setup><ID>

or use the **CLD** command.

#### Local Check (North America Only)

If you are required to use ID numbers, you must also set the Local Check values. Local check tells the TA101 which internal buffers to check for the ID number. To set this parameter, branch down

<TA101><Setup><Lcl Chk>

and select the 'B' channel, then enter the number of the buffer that contains the ID number. You can use the **CLC** command from the terminal. The Local Check values for 'B' channel 1 must be 'T5' and for 'B' channel 2 must be 'T6'. If IDs are not used, local Check must be set

#### LLC State

In some areas of the United Kingdom, it may be necessary to toggle the state of the Low Level Command mode. Use the LLC command sequence

<TA101><Setup>< LLC>

or the **CLL** command for this if you are having connection problems. In most other locations, including North America, leave the LLC state ON.

#### Sub Address, EAZ (Germany) And Interface Mode

The sub-address for an S/T interface TA (TA101) is set by the **CSA** command:

<TA101><Setup><Sub addr>

This command is used when a **RoadRunner** is connected to a digital PBX. If the TA101 is directly connected to an NT1, then the sub-address should be set to 0. Subaddresses are generally not used in North America. In Germany, when using the 1TR6 switch type, subaddresses are required. Use the **CSA** command to set the EAZ sub address.

**!** note:

The **CTF** command,

```
<TA101><Setup><I/F>
```

sets the interface mode of the internal TA101. **For North American operation with the TA101, the mode should always be set to IGNORE.** For operation elsewhere, initially start with the mode set to IGNORE. If you have problems making or receiving calls, then set the mode to ACTIVE.

Inband

Setting the TA101 inband to ON allows factory support to configure and test you internal TA101 over the ISDN lines. Under normal operation, Inband should be set to OFF.

```
<TA101><Setup><Inband>
```

or use the **CIB** command.

Reset

After the above parameters have been set, it is necessary to reset the TA101 Terminal Adapter. The **CTR** command,

```
<TA101><Setup><Reset>
```

is used to reset the internal terminal adapter and to check if the SPID and ID numbers have been entered correctly for North American operation. The reset process takes from 20 to 40 seconds to complete, and the response will be flash for 2 seconds on the *top line* of the LCD display. The following responses are possible:

- SP1 OK SP2 OK            SPID 1 and SPID 2 initialized properly
- SP1 OK SP 2 BAD        SPID 1 initialized, SPID 2 did not
- SP1 BAD SP2 OK        SPID 1 did not initialize, SPID 2 did
- SP1 BAD SP2 BAD        Both SPIDs did not initialize.

If you require two SPID numbers, and if you get any response other than the first, your TA101 has not been configured properly and you will not be able to make or receive calls. If only one, or no SPID numbers are required, than any response may be OK. Try dialing and see if you can connect to another codec. If you get a bad response, or you cannot dial, please refer to the Troubleshooting Section before calling for assistance.

You can skip to the next section (Page 25) if you are using the TA201 outside North America.

## Terminal Adapter TA201 and TA301 Configuration for North America

The TA201 terminal adapter provides one S/T interface for one ISDN BRI (2 x 64 or 2 x 56 kb/s) line. In North America, the Telco provides a 'U' interface, therefore an external NT-1 must be used between the **RoadRunner** and the wall jack. Elsewhere, the Telco provides an S/T interface and an external NT-1 is not needed. The TA201 contains all country specific configuration and provisioning information in memory, and there is no need to change ROM chips when using your **RoadRunner** in a different country.

The TA301 is identical to the TA201 except that it contains a built-in NT-1 and connects directly to the ISDN 'U' interface provided in North America. **RoadRunner** units intended for use in North America will be shipped with the TA301 unless specified otherwise.

Probably the most confusing aspect of ISDN codecs is configuring the Terminal Adapter for the ISDN in your area. This is especially true in North America, where there are several local 'flavors' of ISDN that are all provisioned differently. Elsewhere, configuration of the terminal adapter may be as simple as insuring the proper country is selected.

In North America, the ISDN service provider must supply certain information to correctly configure the Terminal Adapter:

- ISDN 'flavor,' e.g., National ISDN or Custom.
- Service Provider Identification Numbers (SPID numbers). National ISDN *always* requires SPID numbers, but some locations using Custom ISDN may *not* require SPID numbers. If SPID numbers are required, most areas use two, but some implementations require only one.

## Selecting Country and Switch Type

It is necessary to tell the TA what type of switch protocol is being used at the Telco central office. The ISDN service provider will give this information to you. You only need to set the switch type once for each TA since it is impossible to have different switch types for the individual 'B' channels in an ISDN line. Select

```
<TAx01><Setup><N. America><Sw type>
```

Select 5ESS CUST only for AT&T Custom service. For 5ESS National ISDN, select NI1.

then select the appropriate switch type, either National or AT&T Custom. Both the TA201 and TA301 are compatible with AT&T Custom Point-to-Multipoint ISDN service. The **CCC** command is used for selecting the country and the **CSW** command is used for setting the switch type from a terminal.

#### Service Provider ID (SPID) Number

**!**note:

For *most* areas in North America, the TA must be told the SPID number of the *calling* ISDN line, that is, the line to which the **RoadRunner** is connected. The ISDN service provider in your area provides this number. **It is important to remember that every time the RoadRunner is moved, or whenever there is a change in the ISDN line, or even area code changes, the SPID and ID number, switch type and possibly other parameters for the TA setup must be updated.** You can store up to 20 ISDN SPID location configurations for later recall.

To set the SPID number using the keypad, go down the branch

```
<TAx01><Setup><N. America><SPID>
```

selecting the desired 'B' channel, and enter the SPID number. Please note also, that each TA supports 2 basic rate ISDN 'B' channels, so if your service provider gave you two SPID numbers you must enter both of them, one for each 'B' channel. Use the **CSI** command to set the SPID number from a terminal.

#### Identification (ID) Number

If you are required to use two SPID numbers, than you must use ID numbers. For the TA201 and 301, the ID number is just the 7 digit ISDN line number connected to the **RoadRunner**. Use the

```
<TAx01><Setup><N. America><ID>
```

branch, and set the ID's for both 'B' channels from the keypad. Use the **CLD** command from a terminal.

**!**note:

**The TA201 and TA301 use a 7-digit ID number for North American operation.**

#### LLC

For North American operation the LLC must be set to ON. This lets the TA accept incoming calls at both 56 and 64 kb/s rates. Use the branch:

```
<TAx01><Setup><N. America><LLC>
```

or the **CLL** command. The LLC state must be set for both 'B' channels.

After resetting the TA201 or TA301, wait at least 30 seconds before attempting to dial.

#### Reset

After the above parameters have been set, it is necessary to reset the terminal adapter. The **CTR** command is used to reset the internal terminal adapter.

```
<TAx01><Setup><N. America><Reset>
```

The TA201 and TA301 currently return no information after a reset.

#### Terminal Adapter TA201 Configuration, Non-North American Operation

The TA201 terminal adapter provides one S/T interface for one ISDN BRI (2x64 or 2x56 kb/s) line. The TA201 contains all country specific configuration and provisioning information in memory, and there is no need to change ROM chips when using your **RoadRunner** in a different country. If the desired country is not listed, try the Germany setting with switch type DSS1.

#### Selecting Country and Switch Type

It is necessary to tell the TA what country and switch protocol is being used by the PTT central office. The ISDN service provider will give this information to you. You only need to set the switch type once for each TA since the switch governs both "B" channels in an ISDN line. Select

```
<TA201><Setup>< country ><Sw type>
```

where *country* = Germany, France, UK or Japan

then select the appropriate switch type (Germany only), either DSS1 or 1TR6. The **CCC** command is used for selecting the country and the **CSW** command is used for setting the switch type from a terminal.

#### LDN / MSN Number

The MSN (Multiple Subscriber Number) allows you to connect several codecs (terminal adapters) to one ISDN bus if the DSS1 Euro-ISDN protocol is used. Each TA201 interface requires two MSN numbers, one for each 64 kb/s channel. You do not need to enter the whole MSN, you just have to enter the last different digits. For example, if your MSN for line 1 is 8115517571 and for line 2 is 8115517581, then you only need to enter '71' and '81' for the MSNs. Use the

```
<TA201><Setup><country><LDN>
```

path or the **CLD** command.

#### LLC (Low Level Command) State (UK Only)

Although this menu item appears under all countries, it is only necessary to set the LLC state in the United Kingdom. Different areas in the UK require different settings. If your TA201 cannot dial properly with the default setting, toggle the setting. Remember that you must set each 'B' channel to the proper state. Use the

```
<TA201><Setup><country><LLC>
```

path or the **CLL** command.

#### Sub-Address and Interface Mode

Sub-addresses are required when using the German 1TR6 switch protocol. Like the MSN used with DSS1, the sub-address enables you to connect several codecs (terminal adapters) to the same ISDN bus. For every terminal adapter, you need two sub-addresses (EAZ numbers), one for each 64 kb/s channel, numbers between 1 and 8.

```
<TA201><Setup><country><Sub addr>
```

or use the **CSA** command.

The **RoadRunner's** interface mode has a different meaning for the TA201 terminal adapter when not used in North America. Some ISDN implementations in some countries require LLC (Low Layer Compatibility) to be turned off. For example, some DSS1 networks in the United Kingdom require LLC and Interface to be turned OFF.

```
<TA201><Setup><country><l/f>
```

or use the **CTF** command.

#### Reset

After the above parameters have been set, it is necessary to reset the TA201 Terminal Adapter. The **CTR** command

```
<TA201><Setup><country><Reset>
```

is used to reset the internal terminal adapter. The TA201 and TA301 currently return no information after a reset.

After resetting the TA201, wait at least 30 seconds before attempting to dial.

## Other TA Parameters — Auto Answer, Auto Reconnect, Dial Time Out and Redial Attempts

The **CAA** command,

<Maint><Dig I/F><Auto Ans>

is used to switch the TA out of the auto answer mode. If the TA is not in the auto-answer mode, then it will not accept any incoming calls. The factory default is set to auto-answer ON. This feature is useful if you want to prevent anyone from dialing into your **RoadRunner**.

If you call another codec and the connection is lost, it is possible to have the **RoadRunner** automatically redial the connection. This is done by setting AutoReCon to YES using the **CAC** command,

<Maint><Dig I/F><AutoReCon>.

This is a very powerful feature when less than ideal lines are used. Remember, however, that when this feature is enabled, only the calling **RoadRunner** can terminate the connection. Also note that the **RoadRunner** will only attempt to redial for the number of times for which REDIAL is set.

The **CRD** command (Redial),

<Maint><Dig I/F><Redial>

sets how many times the **RoadRunner** will attempt to establish connection before giving up. The factory default is 1 redial attempt, i.e., the **RoadRunner** will dial each connection twice. The redial can be aborted by pressing the up arrow button any time after the first dial attempt.

The dial time-out command **CTO** (Dial TO)

<Maint><Dig I/F><Dial To>

sets the time that the **RoadRunner** waits for a connection to be established before giving up. You may need to set the time out to a higher value when using international dialing with long distance access codes.

**!** note:

## Terminal Adapter TA201/TA301 Software Version

From time to time, the TA201/TA301 terminal adapter software may be enhanced as features are added. Upgrading software is as simple as replacing a ROM chip on the terminal adapter. To determine the current ROM version, use the sequence

<TAx01><Setup><country><Version>

or use the **VER** command.

## Using TA Configuration Memory

The **RoadRunner** has the capability to store and recall up to 20 different TA configurations. This feature is ideal if you use your **RoadRunner** from multiple locations. For example, once you have set up a TA for use in a particular venue, you have only to recall that setup the next time you return to that venue.

All relevant parameters are saved: TA type, country, switch type, SPID and ID numbers, local check values, sub addresses, etc.

### Saving Current TA Configuration

To save the current TA configuration, use the keypad sequence:

<TA Type><Save>.

Where *TA Type* is the installed terminal adapter type, either TA101, TA201 or TA301.

When prompted, use the keypad to enter a descriptive name and press **ENTER**. From a terminal or computer, use the **CTE** command and enter a descriptive name. In either case, the **RoadRunner** will return an ID number for later recall.

### Loading Stored Configurations

To recall a previously stored TA configuration, use the keypad sequence

<TA Type><Recall>

to view the stored table using the keypad left and right arrow keys. A sample display is shown here:

ID:5	2-7
MYOFFICE	

This display shows the ID number of the named configuration, and shows the total number of stored configurations. In this example, the configuration 'MYOFFICE' is ID number 5, and it is the second of 7 stored configurations. Remember that the configurations are stored alphabetically.

When the desired configuration is found, press the **ENTER** key to load it.

### Stored Configuration Table Maintenance

The **RoadRunner** is capable of storing up to twenty location specific TA configurations. Adding new configurations is as easy as saving the current configuration, as described above. Loading a table entry from the view menu is as easy as pressing the **ENTER** key once the desired entry is found. Viewing all of the stored entries is also simple. Load the configuration using the keypad sequence

<TA Type><Recall>

and scroll through the table entries using the left and right arrow keys.

To erase a table entry, or clear the entire table, use the keypad sequences:

<Maint><TA Cnfgr><Del entry>

or

<Maint><TA Cnfgr><Clear all>

From a terminal use the **CTD** command to clear one or all stored TA configurations.

## Audio I/O and Level Adjustments

The **RoadRunner** contains a three channel audio mixer. Input 3 (rear panel input) can support both microphone and line level sources, and the input level is changed with the switch located next to the input connector. All inputs are balanced, with a maximum input level of -30 dBu for microphones and +18 dBu for line level. You can connect professional quality, low impedance microphones directly. Phantom power is not provided, nor are unbalanced inputs. High impedance or unbalanced microphones will require external matching devices. Alternatively, you can connect unbalanced sources by connecting hot to

pin 2 and ground to pin 3 of the XLR connector. In this case, you should keep the audio leads as short as possible. **Some phantom power supplies may require the disconnection of the shielding at one side of the cable.**

Adjust the input levels so that the green 'NORM' light illuminates when audio is present and the red 'CLIP' lamp does not. It is recommended that the level controls for all unused inputs be turned down.

Two headphone outputs are available, and the mix of local and return audio is individually adjustable for each headphone circuit. Although the **RoadRunner** is a monaural device, the headphone connectors are designed for stereo headphones, and audio is sent to both ears. **Do not use monaural headphones with two conductor plugs.**

Balanced line level return audio as well as unbalanced line level local and return audio outputs are available on the rear panel. The output levels are fixed at 0 dBu (at nominal input level) relative to input level, >600 Ohm output impedance. The unbalanced outputs use three conductor connectors, with tip and ring wired in parallel.

**!** note:

**Do not use two conductor plugs, as these will short the output.**

### Audio Output Muting

The *return* audio can be muted using the

<Advanced><Decoder><More><Audio Out><Mute>

sequence or the **DMU** command. All return audio outputs, including the headphone, are muted simultaneously.

### Loopback Testing

Loopback testing is a valuable tool for adjusting audio I/O and for debugging. System loopback puts the **RoadRunner** into loopback by linking the encoder output to the decoder input. When in loopback mode, any audio fed into the **RoadRunner** will appear at the return audio outputs. System loopback can be used when the **RoadRunner** is either on-line or off-line. When on-line and in loopback, you will hear local audio, not audio from the far end codec.

Use the keypad sequence

When in single line mode, the loopback bit rate defaults to 64 kb/s and cannot be changed. When in the two line mode, the loopback bit rate defaults to 128 kb/s and cannot be changed.

<Sys LB><Loopback>

to set the loopback mode, or the **CSL** command to set the loopback mode from a terminal or computer. The loopback bit rate selection is automatic and determined by the current encoder bit rate.

**!** note:

**FOR NORMAL OPERATION THE LOOPBACK MODE MUST BE SET TO NONE.**

To return the **RoadRunner** to normal operation, use the keypad sequence

<Sys LB><None>

## Encoder and Decoder Configuration

Since no single algorithm is ideal for all applications, the **RoadRunner** offers several different algorithm/sample rate/bit rate combinations, each with advantages and disadvantages. In addition, the full range of available algorithms insures that your **RoadRunner** can connect with the widest number of codecs. The table below compares some of the algorithm/sample rate/bit rate combinations that are available. Recommended combinations are indicated with a .

Algorithm	Sample rate	Bit rate	Bandwidth	Delay	Cascade	
G.722	16 kHz	56/64 kb/s	7.5 kHz	very low	poor	
MUSICAM	24 kHz	56/64 kb/s	10.2 kHz	moderate	good	
MUSICAM	48 kHz	56/64 kb/s	8.5 kHz	moderate	fair	
Layer III	32 kHz	56/64 kb/s	15 kHz	long	poor	
Layer III	48 kHz	56/64 kb/s	15 kHz	long	poor	
MUSICAM	48 kHz	112/128 kb/s	20 kHz	moderate	excellent	
Layer III	48 kHz	112/128 kb/s	20 kHz	long	fair	

**G.722** is an early compression algorithm based on ADPCM (Adaptive-Predictive Pulse Code Modulation). The delay of this algorithm is very low, and is ideal when talk-back or two-way, on-air conversations are required. Although G.722 has limited bandwidth and audible artifacts, it is quite acceptable for most voice applications. G.722 does not

cascade (re-compress) well and artifacts build up quickly when a decoded bit stream is re-encoded.

**MUSCIAM**, MUSICAM USA's enhanced version of ISO/MPEG Layer II, offers the best possible combination of fidelity, moderate delay and cascading ability at all bit rates. For best possible sound when using lower bit rates (56 and 64 kb/s), use 24 kHz sampling if it is supported by the far-end codec. At 56 or 64 kb/s using 24 kHz sampling, MUSICAM delivers a bandwidth of 10.5 kHz with exceptional signal-to-noise figures and minimal artifacts. At this bit rate MUSICAM is ideal for all voice applications and delivers satisfactory performance for many music applications.

MUSICAM cascades well and the sound quality does not degrade with post-processing and equalization. At 112 or 128 kb/s, MUSICAM is transparent and provides a bandwidth of 20 kHz with exceptional signal-to-noise performance.

**!note:**

Please remember that MUSICAM is a fully compatible enhancement to the ISO/MPEG Layer II standard algorithm. All enhancements are to the encoder; the decoder is defined by the international Standards organizations, and has been left unchanged. Therefore, when receiving audio from a standard Layer II codec, the audio you hear will be Layer II, but the audio heard at the far-end will be MUSICAM. MUSICAM encoding makes *any* Layer II decoder sound better.

**CCSO** and **CCSN** are both MUSICAM Layer II algorithms that are used to communicate with older CCS Audio Products codecs built before MPEG Layer II standardization.

**Layer III** provides the widest bandwidth at low bit rates, up to 15 kHz at bit rates of 56 or 64 kb/s. Layer III is widely used at these low bit rates when wide bandwidth is required; however, the disadvantages of Layer III may outweigh this advantage. Layer III has long delay, noticeable high frequency artifacts and does not cascade well. In addition, post processing and equalization may adversely affect the final audio quality. As with MUSICAM at lower bit rates, lower sampling rates will provide better audio quality. At high bit rates (112 and 128 kb/s) Layer III can provide transparent 20 kHz monaural audio but still has the same disadvantages. Even at high bit rates, Layer III has long delay, does not cascade as well as MUSICAM, and is adversely affected by post-processing. In some applications, Layer III may

provide better-perceived audio than industry standard Layer II, but in most applications, MUSICAM has been judged to be the superior algorithm.

### Quick Setup

The **RoadRunner** offers three ways of configuring the encoder and decoder: Quick Setup, Advanced Setup and pre-programmed Quick Configurations. Quick Setup is ideal when all encoder and decoder parameters are the same. Quick Setup assumes that the decoder is not independent of the encoder, and that the encoder and decoder bit rate and line formats are the same. You can use this Quick Setup routine when connecting to any MUSICAM USA or CCS Audio Products codec. You must use the Advanced Setup sequence or Quick Configurations when connecting to other manufacturer's codecs, since the decoder independent mode must be used.

Using the Quick Setup is easy. Select

<Operation><algorithm><Setup>  
where *algorithm* = MPEGL2, MPEGL3, G.722, CCSO or CCSN

Once in the setup sequence, enter the bit rate, sample rate and line format. Once configured, activate the algorithm using the

<Operation><algorithm><Activate>

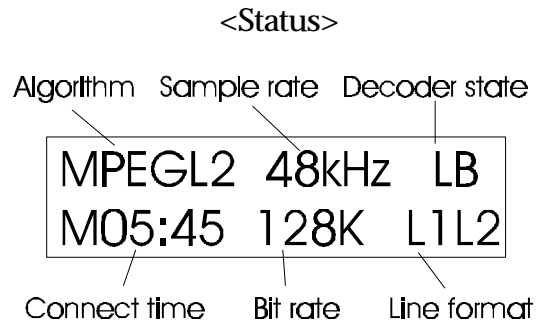
Sequence.

**!**note:

For compatibility with European telephones manufactured by Philips PKI, there are three modes of operation when using the G.722 algorithm. Select NORMAL when connecting to a standard G.722 codec. When connecting to a PKI telephone, you must select either NEWPKI or OLDPKI, depending on the age of the telephone.

### Quick Status

The **RoadRunner** offers a status screen that enables the user to confirm the current configuration at a glance. The status screen, an example is shown here, is accessed by pressing the F1 button or by using the keypad sequence:



The top line shows the selected encoder algorithm (which may be different from the decoder algorithm), the sample rate and the decoder state. LB indicates the **RoadRunner** is in loopback, IND indicates decoder independent operation and blank indicates normal operation.

The bottom line shows the connect time, the selected encoder bit rate and line format. Flashing lines indicate that the line is selected but not connected.

### Advanced Encoder and Decoder Configuration

When connecting to non-MUSICAM USA or CCS Audio Products codecs, when using different algorithms and/or line formats for send and return programming or when broadcasting to two locations, it is necessary to use the Advanced Setup sequence. Using the Advanced Setup is no more difficult than the Quick Setup, only more information is required for complete configuration.

### Advanced Encoder Configuration

To configure the encoder algorithm, line format and sample rate, use either the Quick setup, as described above, or a Quick Configuration as discussed later. The advanced encoder configuration is used only to set the Sine detector, ACE error concealment and header bits.

To access the advanced encoder configuration menu, select

<Advanced><Encoder>

and follow the sequence to select error concealment (ACE), sine detector and header bits. The following choices are available:

- |                |  |
|----------------|--|
| ACE:           | ON or OFF  |
| Sine Detector: | ON or OFF  |
| ISO Header:    | Individually selectable—Copyright, Emphasis, Original, Protect and Private |

**!note:**

**ACE (ESP command)** — ACE (Advanced Concealment of Errors) uses scale factor protection to add another layer of error correction to the already robust MUSICAM algorithm. ACE should be used when less than ideal ISDN lines are used, or when occasional audio artifacts caused by line errors cannot be tolerated. Scale factor protection is *not* supported by all codecs. Only MUSICAM USA’s **CDQPrima** Series and **RoadRunner** codecs support ACE. ACE is also *not* bi-directional. If you enable scale factor protection on your encoder, the far end decoder must also enable scale factor protection or audio is muted.

**!note:**

**Sine detector (ESD command)** — The encoder sine detector is used only when using test equipment to evaluate codec performance. **For normal operation, the sine detector should be OFF.**

**ISO Header bits** — There are five user settable ISO header bits: Copyright (**ECR**), Emphasis (**EEP**), Original (**EOR**), Protect, (**EPR**) and Private (**EPI**). These bits can be used as signaling bits by the far end decoder. The state of these bits is can be observed using the decoder status bits on all **CDQPrima** and **RoadRunner** codecs.

To manually configure the decoder algorithm, bit rate and line format, you must first select Decoder Independent YES

### Decoder Configuration

To access the advanced decoder configuration menu, select

<Advanced><Decoder>

and follow the sequence to select independent operation, algorithm and line format. Other advanced configuration parameters are available using the menu sequence. Other selections include mute, channel select, ACE (scale factor protection) and status bits. The following choices are available:

- Independent: YES or NO
- Bit Rate: 56, 64, 112 or 128 kb/s (if independent selected)
- Algorithm: MPEG Layer 2, CCSN, CCSO, (all MUSICAM algorithms), MPEG Layer 3 or G.722 (if independent selected)
- Line format: 1 line (line 1 or line 2) or 2 line (lines 1 and 2) (if independent selected)
- Mute: ON or OFF
- Channel: LEFT or RIGHT
- ACE: ON or OFF
- Status bits: Monitor the state of the user header bits

! note:

**Decoder Independent (DIN)** — Codecs manufactured by MUSICAM USA and CCS Audio Products contain decoders that are normally slaved to the encoder format, making separate encoder and decoder setups unnecessary. **Codecs manufactured by anyone else, including Telos and Comrex, do not have this decoder/encoder interaction. It is therefore necessary to run the decoder independently from the encoder when connecting your *RoadRunner* to other manufacturer's codecs. It is also necessary to run the decoder independently when the decoder configuration is not the same as the encoder configuration. The decoder bit rate, algorithm and line format setup sequence is available only when decoder independent is selected.**

**Decoder bit rate (DBR)** — For best results, you should select the highest bit rate available end-to-end and appropriate to your application. When the decoder is independent from the encoder, it is possible to select a different bit rate for each direction of transmission as long as the basic clock rate is the same. For example, you can send audio at 64 kb/s, and receive audio at 128 kb/s, but not at 112 kb/s, since a different basic rate is used. You cannot mix 56 and 64 kb/s basic rates.

**Decoder algorithm (DAL)** — A detailed discussion of the available algorithms is found in an earlier section. When operating independently, the algorithm used can be different for each direction of transmission.

**Decoder line format (DLI)** — At 56 or 64 kb/s with an internal terminal adapter or when using the G.722 algorithm, you must use a single line format. Use the 2-line format when using 112 or 128 kb/s bit rate with an internal terminal adapter. The two line format requires two connections be made to the far-end codec; that is, both ISDN 'B' channels are used. When connected to two far end codecs simultaneously, you can switch the return audio between the two units by changing the Line Format from Line 1 to Line 2.

**Decoder Mute (DMU)** and **Channel Select (DCS)** — These decoder parameters have been discussed in an earlier section.

**ACE (DSP)** — ACE is discussed in detail in the Encoder Configuration section. If the far end encoder has ACE enabled, you must enable your decoder ACE.

**Status bits (DRS)** — The status bits are used to ‘read’ the status of the user selectable encoder header bits.

### Broadcasting

With a single **RoadRunner**, it is possible to send the same audio program to two different locations simultaneously. In addition, it is also possible to monitor the return audio from either of the two locations, and instantly switch between them. You can even send the audio from one far end location to the other, mixing in local audio!

Set the encoder to the desired algorithm and sample rate. You must use either 56 or 64 kb/s, and set the encoder line format to Line 1. Set the decoder parameters to match your application (remember, the return audio algorithm does not have to be the same as the send algorithm) and the decoder to Independent. Setting the decoder line format to Line 1 enables you to monitor the return audio from location 1, and setting the decoder line format to Line 2 monitors return audio from location 2. To send audio from one location to another, just loop the **RoadRunner**’s audio output to the audio input.

### Speed Dial and Quick Configuration directory

The **RoadRunner** has a Speed Dial directory capable of holding up to 256 entries. Each entry contains all the information required to completely configure the **RoadRunner**’s encoder and decoder sections, as well as (optionally) storing up to two ISDN ‘B’ channel telephone numbers for establishing the connection.

### Pre-Programmed Quick Configurations

Your **RoadRunner** shipped from the factory with many of the most common configurations pre-programmed into the speed dial directory. Using these pre-programmed configurations insures trouble free communications with all MUSICAM USA and CCS Audio Products codecs, and most other compatible codecs. Please note that some early Telos Zephyr codecs may not be compatible *in all modes* with the **RoadRunner**.

The following configurations have been pre-loaded into **RoadRunner**. When connecting to a non-MUSICAM USA or CCS Audio Products codec, you must use a ‘Decoder Independent’ configuration. If connecting to a **CDQPrima**, use the Prima equivalent Quick

Configuration on the **CDQPrima**, setting the encoder to mono for joint stereo configurations.

ID	Description	Bit Rate	Sample Rate	Algorithm	Line format	Decoder Independent	Prima Equiv.
0	L2/56/24NO:QS	56	24	MPEGL2	Line 1	No	16
1	L2/56/24YES:QS	56	24	MPEGL2	Line 1	Yes	
2	L2/56/32NO:QS	56	32	MPEGL2	Line 1	No	
3	L2/56/32YES:QS	56	32	MPEGL2	Line 1	Yes	
4	L2/56/48NO:QS	56	48	MPEGL2	Line 1	No	9, 18
5	L2/56/48YES:QS	56	48	MPEGL2	Line 1	Yes	24
6	L2/64/24NO:QS	64	24	MPEGL2	Line 1	No	0
7	L2/64/24YES:QS	64	24	MPEGL2	Line 1	Yes	
8	L2/64/32NO:QS	64	32	MPEGL2	Line 1	No	
9	L2/64/32YES:QS	64	32	MPEGL2	Line 1	Yes	
10	L2/64/48NO:QS	64	48	MPEGL2	Line 1	No	8
11	L2/64/48YES:QS	64	48	MPEGL2	Line 1	Yes	25
12	L2112/32NO:QS	112	32	MPEGL2	2 Line	No	23
13	L2112/32YES:QS	112	32	MPEGL2	2 Line	Yes	
14	L2112/48NO:QS	112	48	MPEGL2	2 Line	No	34, 17
15	L2112/48YES:QS	112	48	MPEGL2	2 Line	Yes	26
16	L2128/32NO:QS	128	32	MPEGL2	2 Line	No	22
17	L2128/32YES:QS	128	32	MPEGL2	2 Line	Yes	
18	L2128/48NO:QS	128	48	MPEGL2	2 Line	No	35, 10
19	L2128/48YES:QS	128	48	MPEGL2	2 Line	Yes	27
20	L3/56/24NO:QS	56	24	Layer 3	Line 1	No	
21	L3/56/24YES:QS	56	24	Layer 3	Line 1	Yes	
22	L3/56/32NO:QS	56	32	Layer 3	Line 1	No	
23	L3/56/32YES:QS	56	32	Layer 3	Line 1	Yes	
24	L3/56/48NO:QS	56	48	Layer 3	Line 1	No	28
25	L3/56/48YES:QS	56	48	Layer 3	Line 1	Yes	30
26	L3/64/24NO:QS	64	24	Layer 3	Line 1	No	
27	L3/64/24YES:QS	64	24	Layer 3	Line 1	Yes	
28	L3/64/32NO:QS	64	32	Layer 3	Line 1	No	
29	L3/64/32YES:QS	64	32	Layer 3	Line 1	Yes	

ID	Description	Bit Rate	Sample Rate	Algorithm	Line format	Decoder Independent	Prima Equiv.
30	L3/64/48NO:QS	64	48	Layer 3	Line 1	No	29
31	L3/64/48YES:QS	64	48	Layer 3	Line 1	Yes	31
32	L3112/32NO:QS	112	32	Layer 3	2 Line	No	
33	L3112/32YES:QS	112	32	Layer 3	2 Line	Yes	
34	L3112/48NO:QS	112	48	Layer 3	2 Line	No	
35	L3112/48YES:QS	112	48	Layer 3	2 Line	Yes	
36	L3128/32NO:QS	128	32	Layer 3	2 Line	No	
37	L3128/32YES:QS	128	32	Layer 3	2 Line	Yes	
38	L3128/48NO:QS	128	48	Layer 3	2 Line	No	
39	L3128/48YES:QS	128	48	Layer 3	2 Line	Yes	
40	G.722/56NO:QS	56	16	G.722	Line 1	No	5, 6
41	G.722/56YES:QS	56	16	G.722	Line 1	Yes	
42	G.722/64NO:QS	64	16	G.722	Line 1	No	7
43	G.722/64YES:QS	64	16	G.722	Line 1	Yes	
44	G.722/H.221:QS	64	16	G.722/H.221	Line 1	No	19
45	MUSICLINE56	56	24	MPEGL2	Line 1	No	*
46	MUSICLINE64	64	24	MPEGL2	Line 1	No	*
47	MUSICLINE112	112	48	MPEGL2	2 Line	No	*
48	MUSICLINE128	128	48	MPEGL2	2 Line	No	*

To load a Quick Configuration, press the **[SDIAL]** button, enter the ID number and press **[ENTER]**. You can also use the **CSD** command from a terminal.

If you do not know the ID number, you can scroll through the directory pressing the **[SDSET]** key and selecting the <View Dir> option. Use the arrow keys to view the directory. Once the desired entry is found, press the **[ENTER]** key once to view the settings and *twice* to execute the configuration.

**!note:**

Please note that your **RoadRunner** comes pre-programmed with MUSICAM USA's 24 hour Music Line numbers. Speed Dial entries 45 through 48 will automatically dial into our Music Line if your **RoadRunner** is equipped with an internal terminal adapter and is connected to an active ISDN line. The Music Line numbers are programmed for North American use, with no PBX or access codes. For

testing outside North America, or when connecting through a PBX system, the numbers will have to be edited.

### Creating Quick Configurations and Speed Dial Entries

Once you have configured the encoder and decoder to your satisfaction, you can save the configuration for later recall. To automatically create your own Quick Configuration using the current settings, simply press the **SDSET** button, and select the <Save Current> option. You will be prompted to enter a descriptive name, up to 15 characters, spaces are not permitted. Terminate the name by pressing the **ENTER** key. **RoadRunner** will return an ID number that can be used to recall the configuration. Alternatively, you can use the **CSE** command from a terminal.

Saving the current configuration when the **RoadRunner** or **RoadRunner Plus** is not connected to another codec (off-line) creates a non-dialing Quick Configuration. Saving the current configuration when the **RoadRunner** has dialed into and is on-line with another codec saves the configuration *and* the phone numbers, thus creating a Speed Dial entry.

Using and editing Quick Configurations and Speed Dial entries will be discussed in a later section.

You can also manually add an entry into the Speed Dial table using the

**SDSET** <Add entry>

sequence. Follow the prompts, entering all information in sequence. The **RoadRunner** will return the ID number of the new entry. If you enter the '#' character as the phone number, the entry will be saved as a non-dialing Quick Configuration.

### Deleting and Editing Quick Configurations

Although the Quick Configuration/Speed Dial directory can hold up to 256 entries, the table can quickly become full of no longer used entries. To delete the entries that are no longer used, press the **SDSET** button, select <Delete entry> from the menu and enter the ID number of the entry to delete. You will *not* be prompted to verify your selection before the **RoadRunner** deletes it. You can also use the **CDS** command from a terminal. If you do not know the ID number of the entry you want to delete, scroll through the directory by pressing the **SDSET** button and selecting the <View Dir> option.

You can also delete the entire Speed Dial table although this is not recommended since the 49 preloaded configurations will also be lost.

To edit an entry, press the **SDSET** button and select the <Edit entry> option from the menu. Using the left and right arrow keys, locate the entry you wish to change, press **ENTER**. Use the arrow keys to scroll through the parameters. Once the parameter you wish to change is displayed, press **ENTER** to change it. **Pressing the up arrow** will save the change and overwrite the current parameter value. Note that the ID number is not changed.

## Speed Dialing and Using Quick Configurations

The only difference between speed dialing and Quick Configurations is that the Speed Dial entries have phone numbers associated with them and Quick Configurations do not. As with Quick Configurations, all Speed Dial entries set all relevant encoder and decoder parameters, but they also dial out to other codecs. Therefore, unlike Quick Configurations, speed dialing works only when an internal terminal adapter is used.

To load a Quick Configuration or Speed Dial, press the **SDIAL** button, enter the ID number assigned by the **RoadRunner** and press **ENTER**. You can also use the **CSD** command from a terminal.

If you do not know the ID number, you can scroll through the directory using the keypress sequence **SDSET** <View Dir> and use the arrow keys to view the directory. Once the desired entry is found, press the **ENTER** key twice to execute the configuration or dial. Remember that Speed Dial entries share the same directory as Quick Configurations.

## Manual Dialing

It is easy to use the front panel dialing keypad to make all connections. Once you have selected the encoder and decoder parameters (or used a Quick-Configuration), simply press the **DIAL** button. The **RoadRunner** will prompt whether to dial both lines, line 1 or line 2. Once selected, just enter the phone number and press the **ENTER** key. If you have selected 112 or 128 kb/s operation or 2-line dialing, you will be prompted to enter a second number. **RoadRunner** remembers the last number dialed on each line until power is removed.

You can abort the dialing sequence at any time by pressing the up arrow key before the connection is established. Once the connection has been established, press the **END** key followed by the **ENTER** key to hang up.

Setting the encoder bit rate also sets the connection bit rate. Remember that you can use the front panel keypad for dialing only with an internal terminal adapter. To dial from a terminal, use the **CDI** command, and use the **CHU** command to hang up.

## Call Termination

No matter how a connection was established, manually, using Speed Dial, or initiated from a far end codec, a call is terminated by pressing the **END** button, selecting the lines to drop, and the pressing the **ENTER** button.

## Advanced Features

### Remote Control

The **RoadRunner** can be connected to a computer or terminal for remote control operation. Any terminal emulation program for PC, Macintosh or Sun can be used as long as VT-100 emulation, no parity, 8 data bits and 1 stop bit is supported. A standard, 9-pin RS232 data cable is used to connect your PC's Com port to the **RoadRunner's** remote control connector. X-ON/X-OFF protocol is not supported. See appendix C for the connector pin-outs.

There are well over 50 commands that are used to operate all **RoadRunner** functions. On-line command syntax help is available for all remote control commands, and is accessed from the terminal by typing

**HELP** *command*        where *command* is the 3-letter command name.

All commands are divided into categories, such as common, encoder, decoder, etc. Command categories are listed by the command

**HELP ?**

Commands within each category are displayed by typing

**HELP** *number*        where *number* is the command category number.

A complete list of all remote control commands, showing command syntax and descriptions is available from MUSICAM USA for a nominal shipping and handling charge, or is available on-line at [www.musicamusa.com](http://www.musicamusa.com).

Configuring the rear panel remote control port is accomplished from the front panel keypad using the sequence:

<Maint><Rmt Ctl>.

The options available are Port Baud (**CRB**) , Protocol (**CPC**) and Command Echo (**CRE**). Baud rates from 1,200 to 38,400 bps are supported. For normal operation, Protocol should be set to NO and Echo should be set to YES. It may be necessary to set Protocol to YES if you are controlling the **RoadRunner** from within another program or application.

### Software Maintenance and Upgrading

If any single feature can be highlighted that sets the **RoadRunner** apart from all other similar codecs available today, it is the **RoadRunner's** ability to easily upgrade not only the control software, but also the software controlling the audio compression algorithms. The software that controls all processes within the **RoadRunner**, including the powerful control processor and all DSPs, is contained in non-volatile flash-RAM. This allows the software to be easily updated as advances are made, without having to return the **RoadRunner** to the factory.

The current command processor version is always displayed after the **RoadRunner** boots, and this and all other software module versions can be displayed at any time using the

<Maint><General><Version>

sequence, or the **MVN** command. Please remember that not all software modules have the same version number. The terminal adapter software version can be displayed with the sequence:

<TAx01><Setup><country><Version>.

Upgrading your **RoadRunner's** software is easy, and requires only an IBM compatible PC and a remote control cable. Windows is not required since all downloads are performed from the DOS prompt. MAC download routines are not available, but we have found that

some Windows and DOS emulation programs for the MAC do work for this application.

To determine if new or upgraded software is available, contact MUSICAM USA or CCS Europe. You can also log on to our Web Site at [www.musicamusa.com](http://www.musicamusa.com), follow the links to Technical Support for the RoadRunner, and check the current software version. You can download the most current versions directly from our Web Site. A full software upgrade takes about 30 minutes.

### Hot Keys

Your **RoadRunner** has four user programmable 'Hot' keys on the keypad that can be programmed to execute any single command. The **F1** button has been pre-programmed to load the status screen. The other function buttons can be programmed as you wish. For example, you can program a button for decoder independent YES and another button for decoder independent NO. This makes single button selection of decoder independent operation.

### Rebooting and Resetting Factory Defaults

It may sometimes be necessary to re-boot the **RoadRunner**. Re-booting is as simple as turning the **RoadRunner** off and then on again. The **RoadRunner** remembers the last configuration loaded, and will re-boot using the last known configuration. Please remember that if an invalid configuration was loaded before the re-boot, then the same invalid configuration will be loaded after the re-boot.

It may sometimes be necessary to return your **RoadRunner** back to a factory default configuration. Although not likely, it is possible to configure your **RoadRunner** in such a way that it may not function properly. It is often easier to start over by reloading factory defaults than to figure out what is wrong with the configuration.

Factory defaults can be reloaded using the keypad sequence

<Maint><General><Set dflts>,

using the **CDF** command or by performing a '1' reset. This will restore all factory default settings and will restore a default configuration that is known to work. The '1' reset is used when the keypad does not respond, and is performed by the following steps:

**!** note:

- Turn the **RoadRunner** off.
- Turn the **RoadRunner** on while pressing the '1' button.
- Release the '1' button only after the display flashes "RESET PARAMETER REQUEST."
- Let the **RoadRunner** continue the reboot cycle.

After a '1' reset, your **RoadRunner** will be configured in loopback, 128kb/s, TA301 terminal adapter installed. Information that is required by the internal terminal adapter is *not* lost. If you are using any other TA or DIF, you must configure the **RoadRunner** for these now.

**!**note:

Note that if you are not using an internal terminal adapter TA201 or TA301 you must tell the **RoadRunner** what is actually installed using the

<Maint><Dig I/F><Type>

sequence, but the TA parameters (SPID, ID, etc.) do not need to be re-entered.

#### Keypad Beeper and Display Brightness

The **RoadRunner** contains a keypad beeper that provides feedback to the user by emitting a short chirp sound each time a key is pressed. In some applications, it may be necessary to mute this beep, and this can be done using the keypad sequence

<Maint><Beeper>

or the **MBX** command.

The display contrast can also be adjusted over a wide range for ease of viewing at any angle and under varying lighting conditions. Use the keypad sequence

<Maint><Contrast>

or the **CCV** command to adjust the display.

## Troubleshooting

**A**s complex as any audio codec may be, when combined into a complete system of multiple codecs, terminal adapters or network adaptation electronics and transmission facilities, it's a wonder anything works at all.

But what do you do if something doesn't work? The first instinct may be to blame what you can see, that is, the **RoadRunner**. Before you kick the **RoadRunner**, or even kick the cat, you will need to determine just what part of the complete system is giving you problems. Although against your first instincts, you really must consider everything in the entire system, including the wires, the transmission medium, the terminal adapters or CSU's, the local and long distance telephone companies, all the equipment at the other end, and even pilot error.

Before we step through the process of isolating the problem, there are a few basic procedures to get out of the way. First, whenever experiencing any problems, you should reboot not only your **RoadRunner**, but the codec at the other end as well. If rebooting does not clear the problem, try resetting to factory defaults and reconfiguring. The procedure for resetting factory defaults can be found on page 44.

## Audio Problems

### No Audio in Loopback

Since a '1' reset of all factory defaults sets your **RoadRunner** into a known, working configuration and also puts it into loopback mode, you should hear your own audio. If you do have audio I/O in loopback, you can skip to the next section.

If you have not already performed a factory default reset (see page 44), do so now. After a reset, your **RoadRunner** should be framed, and since it is in loopback, audio that is present at the input should be

present at the output. Do not attempt to change the encoder/decoder bit rate while the **RoadRunner** is in loopback. The current line format sets the loopback bit rate. If the **RoadRunner** is configured for one-line operation, the loopback bit rate is 64 kb/s. The loopback bit rate defaults to 128 kb/s when in 2-line mode.

Symptom	Possible cause	Solution
No audio in loopback	—Bad cables	1. Check all cables, disconnect I/O cables from <b>RoadRunner</b> , and connect together. If no audio, replace cables.
	—Output muted	1. Check decoder muting (<Decoder><Audio Out> <Mute>)
	—Input/output levels not set properly.	1. Check level settings 2. Certain phantom power supplies and microphone pre-amps require that the cable shielding be lifted at one end.
	—Invalid encoder or decoder bit rate	1. Only 64 or 128 kb/s.

### No Audio when Connected to Another Codec

After you are certain that you have established a connection with a far end codec at the proper bit rate, you should be framed, and have bi-directional audio. To determine if you are framed to the far end codec, the ON LINE LED should be illuminated.

### Hint:

If you have connected to another **RoadRunner**, you should both use the same Quick Configuration to insure setup compatibility. If connected to a **CDQPrima** or **Prima LT**, you should insure that an appropriate configuration is used. When connecting to a codec not manufactured by MUSICAM USA or CCS Audio Products, you must use a decoder independent configuration.

Symptom	Possible cause	Solution
Connection established, no audio, not framed. There may be relay	—Bit rate / connection rate mismatch.	1. Check connect rate and encoder/decoder bit rate. Encoder/decoder bit rate must be multiple of connect rate.
	—Incompatible line	

<p>chatter</p>	<p>formats</p> <p>—Incompatible connect rate</p> <p>—Non MUSICAM USA codec at far end</p> <p>—Algorithm mismatch</p> <p>—Invalid bit rate / sample rate combination</p>	<p>1. Internal TA cannot communicate using 2 lines to ADTRAN ISU128 or similar terminal adapter</p> <p>1. Connect data rate not supported at both locations</p> <p>2. Try connecting to our Music Line (732-706-1437, 56 or 64kb/s, single line).</p> <p>1. Decoder must be set to Independent YES when connecting to non-MUSICAM USA codecs.</p> <p>1. Check encoder/decoder algorithms match on both ends</p> <p>1. Insure combination is supported. Low sample rate with high bit rate is not supported</p>
<p>Connection established, framed in one direction, may have audio in one direction</p>	<p>—Decoder independent</p> <p>—Sample rate not valid.</p> <p>—Bit rate not supported by service.</p> <p>—Line format mismatch.</p>	<p>1. Check that decoder parameters match the far-end encoder parameters on both sides of the connection. If one end is a CDQ200x, DIP switch 6 on CDQ200x decoder must be down. Or you must select a decoder independent configuration</p> <p>1. CDQ2000 only supports 48 kHz sampling.</p> <p>1. With ISDN it is possible that 64K is not supported in both directions. Try connecting at another bit rate.</p> <p>1. Check both ends are using the same line format.</p> <p>2. Quick configurations default to Line 1. If you connect using Line 2, the selected lines must be changed.</p>
<p><b>RoadRunner</b> connects and frames in both directions,</p>	<p>—Scale factor protection mismatch.</p>	<p>1. If encoder scale factor protection is enabled, <i>far-end</i> decoder scale factor protection <i>must</i> be enabled.</p>

does not pass audio or passes audio in only one direction	—Decoder independent setting mismatch.	1. Decoder should be dependent for most applications. Must be independent to frame to non-CCS/MUSICAM USA products.
	—Wrong input channel selected	1. On stereo codecs, only left input is used for mono. Check copy/swap mode, if available.
	—Output muted	1. Check decoder mute mode

## Connection Problems (ISDN)

Connection problems are harder to troubleshoot since more than the codecs are involved. Connection problems may be the fault of the codecs, but can also be related to the terminal adapters, wires, local telephone network, long-distance service provider, etc.

Symptom	Possible cause	Solution
<b>RoadRunner</b> connects, line(s) drop after time.	<ul style="list-style-type: none"> <li>—NT1 failure.</li> <li>—ISDN problem</li> <li>—External terminal adapter.</li> </ul>	<ul style="list-style-type: none"> <li>1. Replace NT1 if so equipped.</li> <li>1. See text below.</li> <li>1. Older external terminal may be incompatible with certain ISDN configurations</li> </ul>
<b>RoadRunner</b> can place calls or receive calls, not both.	—ISDN not provisioned properly.	<ul style="list-style-type: none"> <li>1. Check SPID and ID numbers</li> <li>2. Contact service provider and check provisioning. See Appendix D.</li> </ul>
<b>RoadRunner</b> can only connect locally (North American operation)	—No long distance carrier specified when ordering ISDN service.	1. Contact service provider and specify a long distance carrier. You may have to open an account with the selected carrier.

If your **RoadRunner** connects and frames, but the line drops after time (several minutes to several hours) this may be a problem with the ISDN service or with the NT1 (North American operation). We have seen this

and except for a few instances where replacing the NT1 cleared the problem, it always turns out to be ISDN related. Remember that it is highly unlikely that a codec works sometimes and not other times. We

have also seen these symptoms when using certain older terminal adapters, either internal or external, which have software that is

If replacing the NT1 does not clear the problem, contact your service provider. They will perform a BERT test, which will most likely show

minutes, and will only show 'background' errors, which do not affect the performance of the **RoadRunner**

signaling channel (the 'D' channel) will cause problems, and are not found easily. Ask your service provider to run a BERT test for at least two hours, overnight if possible (to find burst errors), and to test the whole BRI, including the 'D' channel.

Unfortunately, any tests performed locally will only test the condition of your local loop and central office. If the problem is at the other end of the connection, with an intermediate central office, or with your long-distance company, your local service provider cannot help. Do not attempt to use our 'Music Line' as a troubleshooting tool, since this connection is automatically terminated after 15 minutes. Do try using a

problem in several instances. You can also ask your service provider or MUSICAM USA for a loopback number.

your service provider. Dial from your first line to your second line and see if the connection drops. If it does not, this indicates that your local

codec or a local loop-back number. If this works, your local switch is working properly. If it fails, then the problem is on the outbound side

back number. If this fails, the problem is most likely with your long-distance provider. MUSICAM USA will provide you with a list of

request.

Please note that in North America, you must specify a long-distance

long distance service. You may also have to sign up directly with that carrier to open an account.

---

Another thing to request from your service provider, and they may be reluctant to do this, is a circuit trace. The central office switch makes a record of all call transactions, including setup and termination requests, and call setup errors. With this information, it may be possible to isolate the cause of the trouble, or at least which end of the connection is requesting the termination.

## Connection Problems (Non-ISDN)

The **RoadRunner** can be used with non-ISDN transmission systems, such as dedicated 56 kb/s or 64 kb/s lines, fractional T1 and satellite. When using multiple lines to get higher transmission rates, it is imperative that the lines be ordered and configured properly.

When ordering the lines, you should inform the service provider that all lines will be used together to achieve a single, higher bit rate path. For example you must tell the service provider that you will use two 64 kb/s dedicated lines to achieve a 128 kb/s link. You must make sure that all lines are in contiguous channels in the same di-group *at both ends*. If two-wire circuits are available, get these instead of four-wire.

A di-group is a group of four consecutive channels that share the same circuit card in the central office channel bank. Since they share the same card, they share the same clock source. When using multiple line it is important that all lines use the same clock, since any clock drift between lines will cause problems with the **RoadRunner**. As an example, dedicated lines 3 and 4 are contiguous and on the same di-group, but channels 4 and 5, although contiguous, are not on the same di-group and may not work. You must verify that you were given consecutive channels in the same di-group for *both ends of the connection*, since crossovers are normal.

We have seen instances where the brand of CSU/DSU makes a difference. For example, in several locations, only 'Brand A' CSU/DSUs worked, and in other locations, only 'Brand B' worked. We can offer no explanation for this, but we have seen this in many different locations.

Regardless of what brand CSU/DSU you are using, the following settings must be selected:

- CS (Clear to Send) must be forced ON
- CS Delay must be SHORT
- Antistream Timer must be disabled
- CD (Carrier Detect) must be NORMAL

SR (Data Set Ready) must be forced ON  
Scrambler (64 kb/s only) must be ON

illuminated, and the RS indicator should not.

If you can connect and frame on each line individually, but not when using before calling MUSICAM USA for assistance. You may have to use a decoder independent configuration.

The most common problems that **RoadRunner** terminal adapter setup. Most problems are due to improper provisioning of your ISDN service, or improper TA configuration. The Appendix C to your service provider.

In order to set up the TA101 terminal adapter properly in North *must have* the following information (For non-North

- Service Provider Identification number (SPID number) for all
- Software version if switch type is AT&T 5ESS.
- National ISDN or Custom Point-to-Point.

5ESS, National ISDN:

must end in '000'. Some service providers will give a SPID number that begins with '01' and ends with only one '0'. Add two

**RoadRunner.** You must enter 'NI1' as the switch type.

If you have been given only one SPID number, enter this number for the first 'B' channel only. Do not enter any ID numbers,

may result in "SP1 OK SP2 BAD". This is

---

the normal response since only one SPID has been entered.

If your switch software is AT&T National ISDN version 5E9.1, then your TA101 cannot be used. Please contact MUSICAM USA for a replacement terminal adapter

5ESS, Custom:

If your service provider says you have 'Custom ISDN', you must have 'point-to-

Software version 5E6 or earlier:

Set the switch type to 5E6. SPID numbers

digits of your 7 digit ISDN number. Local check should be set to NONE. A TA reset result in "SP1 BAD SP2 BAD" since SPIDS are not used.

Software version 5E8 or later:

SPID numbers are in the format '01' + 7 digit number + '000' and are used. Set switch type to 5E8.

SPID numbers may be provided but are not used or entered. Set switch type to 5E8. A *may*

**NOTE: 1 + area dialing is required for all calls, even local. 5E9.1 National ISDN**

DMS-100, National ISDN: SPID numbers a

with the area code + 7 digit number. The

provided by your service provider, do not

## TA201 / TA301 Setup

The most common problems that **RoadRunner** users experience is with terminal adapter setup. Most problems are due to improper provisioning of your ISDN service, or improper TA configuration. The easiest way to be sure your service is provisioned properly is to FAX Appendix F to your service provider.

The TA201 is an international terminal adapter that can be used anywhere ISDN is supported without changing ROM chips. The TA301 is similar to the TA201 except that it contains a built-in NT-1 and therefore is for North American operation only.

In order to set up the TA201/301 terminal adapter properly in North America, you *must have* the following information (For non-North American configuration, contact your sales representative:

- Service Provider Identification number (SPID number) for all ‘B’ channels, if required.
- National ISDN or Custom ISDN protocols.

National ISDN:

If your SPID number begins with ‘01’, then it must end in ‘000’. Some service providers will give a SPID number that begins with ‘01’ and ends with only one ‘0’. Add two more zero’s, for a total of three, then enter the SPID number into **RoadRunner**. You must enter ‘NI1’ as the switch type.

If you have been given only one SPID number, enter this number for the first ‘B’ channel only.

5ESS, Custom:

If you service provider says you have ‘Custom ISDN’, you can have ‘point-to-point’ or ‘point-to-multipoint’. In either case, set the switch type to 5ESS Custom.

5ESS, National or Custom, version 5E9.1:

**1 + area code + phone number dialing is required for all calls, including local.**

## **RoadRunner**

DMS-100, National ISDN:

with the area code + 7 digit number. The

provided by your service provider, do not

In any of the above cases, if SPID numbers are used, ID numbers are also used. You must use a seven-digit ID number when using a

Very early versions of the TA201/301 did not support 56 kb/s operation. MUSICAM USA will be happy to upgrade any of these early

## Control Problems

Symptom	Possible cause	Solution
Keypad not responding		1. Reset to factory defaults
Not responding to remote terminal control	—Improper cable. —Incorrect port setting. —Incorrect protocol mode.	1. Use standard RS232 cable 1. Check settings match terminal or computer. 1. Insure RS232 protocol is 'OFF' for terminal control, 'ON' for program control.
"Arguments Bad" error message when configuring or speed dialing	—Incorrect number of arguments for command —Incorrect line/bit/sample rate/algorithm mode combination	1. Check command syntax 1. Insure correct settings



## Appendix A — DIF Pin Out

### DIF 101—X.21 / RS449

DB15F connector, both connectors on card wired as follows:

	Function	Pin	
1	Frame Ground		GND
2		9	TD B
	CON A	10	
4	RD A		RD B
5		12	IND B
	RET A	13	
7	BYT A		BYT B
		15	

### DIF 102—V.35

DB15F connector, both connectors on card wired as follows:

Pin		Pin	Function
	Frame Ground	8	
2	TD A		TD B
3		10	DTR
	RD A	11	
5	not connected		RLSD
6		13	RET B
	TET A	14	
		15	CTS

## Appendix B Rear Panel Pin Outs

### Relay outputs and opto-inputs (future):

1	Relay A, normally open	8	OPA+
2	Relay A, normally closed	21	OPA-
14	Relay A, common	10	OPB+
		22	OPB-
15	Relay B, normally open	11	OPC+
16	Relay B, normally closed	23	OPC-
3	Relay B, common	12	OPD+
		24	OPD-
4	Relay C, normally open		
5	Relay C, normally closed		
17	Relay C, common		
18	Relay D, normally open		
19	Relay D, normally closed		
6	Relay D, common		

20, 25 Ground

12, 13 +5 VDC

### Remote Control / Software Upgrade:

2	TD
3	RD
5	Gnd

## Appendix C — ISDN Ordering and Provisioning

## North American ISDN Ordering Contacts

Ameritech	800-TEAMDATA
AT&T	800-222-7956
Bell Atlantic	800-570-ISDN
Bellcore	800-992-ISDN
BellSouth	800-428-ISDN
Cincinnati Bell	800-566-DATA
GTE	800-888-8799
MCI	800-MCI-ISDN
Nevada Bell	702-333-4811
NYNEX	800-GET-ISDN
Pacific Bell	800-4PB-ISDN
Rochester Telephone	716-777-1234
SNET	203-553-2369
Sprint	913-624-4162
Stentor Canada	800-578-ISDN
Southwestern Bell	800-992-ISDN
US West	800-246-5226 or 303-896-8301
Wiltel	918-588-5069

## North American ISDN Provisioning

In an effort to make ISDN ordering and provisioning as easy as possible, we recommend faxing the following five pages to your ISDN service provider. If provisioned as shown on these pages, your ISDN circuit will work with your **RoadRunner**, regardless of terminal adapter used. If given a choice between AT&T Custom or National ISDN, we recommend National ISDN. Also note that **when ordering ISDN service, you must ask for long distance service and specify a carrier**. Unlike regular telephone service, long distance is not automatically provided.

## AT&T 5ESS Custom

Request from the telephone company an ISDN line in a “Point To Point” configuration with 2B1Q line code. Your ISDN line must be configured to allow circuit switched data on both B-channels and signaling on the D-channel. Request that the Telephone Company program your ISDN line with the following attributes:

- Maximum terminals set to 1 (this tells the switch that there is 1 terminal active on this line.)
- Maximum B-channels set to 2; Actual User settings (this tells the switch that you are an actual user and may use both B-channels simultaneously.)
- Circuit switched data set to 2; circuit switched data channel set to any (this tells the switch that you may use both B-channels simultaneously. The “Any” tells the switch that either B-channel can be used for data.)
- Terminal type is Type A - Basic Terminal (this tells the switch you are a basic ISDN terminal.)
- Display set to Yes (this tells the switch that you have display capabilities.)
- Call appearance quantity set to 1 (this tells the switch that you want 1 appearance of your primary telephone number.)
- Call appearance preference set to Idle (this tells the switch that your software will make a positive choice of which call appearance it will use to initiate a call.)

The Telephone Company will also need to know any additional voice features that you require on your ISDN lines. Examples of these features are Caller ID and Call Forwarding. PLEASE REMEMBER TO SPECIFY A LONG DISTANCE CARRIER.

## AT&T 5ESS - National ISDN 1

Request from the telephone companies a National ISDN 1 ISDN line in a “multipoint” configuration with 2B1Q line code. The optional “multipoint” configuration will allow you to have a separate telephone number for each B-channel; however, it will physically be only one ISDN line. The Telephone Company should supply you with a different telephone number and SPID (Service Profile Identification) for each B-channel in a multipoint arrangement. Your ISDN line must be configured to allow circuit switched data on both B-channels and signaling on the D-channel. Request that the Telephone Company program your ISDN line with the following attributes:

- Maximum terminals set to 2 (this tells the switch that there are 2 terminals active on this line.)
- Maximum B-channels set to 2; Actual User settings (this tells the switch that you are an actual user and may use both B-channels simultaneously.)
- Circuit switched data set to 2; circuit switched data channel set to any (this tells the switch that you may use both B-channels simultaneously. The “Any” tells the switch that either B-channel can be used for data.)
- Terminal type is Type A - Basic Terminal (this tells the switch you are a basic ISDN terminal.)
- Display set to Yes (this tells the switch that you have display capabilities.)
- Circuit switched data limit set to 2 (this tells the switch that you may receive 2 data calls.)
- Call appearance preference set to Idle (this tells the switch that your software will make a positive choice of which call appearance it will use to initiate a call.)

The telephone company will also need to know any additional voice features that you require on your ISDN lines. Examples of these features are Caller ID and Call Forwarding. PLEASE REMEMBER TO SPECIFY A LONG DISTANCE CARRIER.

FAX-PAGE 3

## AT&T 5ESS — Custom

- 2B1Q line code
- 2B&D line - Point To Point
  - B1 - circuit switched voice/data
  - B2 - circuit switched voice/data
  - D - signaling only
  - set MTERM to 1
  - set MAXB CHNL to 2; ACT USR to Y
  - set CSD to 2; CSD CHL to ANY
  - set TERMTYP to TYPE-A; DISPLAY to Y
  - set CA QTY to 1
  - set CA PREF to I
- list any additional data features required
- specify long distance carrier

## AT&T 5ESS — National ISDN

- 2B1Q line code
- 2B&D line - Standard
  - B1 - circuit switched voice/data
  - B2 - circuit switched voice/data
  - D - signaling only
  - set MTERM to 2
  - set CHNL to 2; ACT USR to Y
  - set CSD to 2; CSD CHL to ANY
  - set TERMTYP to TYPE-A; DISPLAY to Y
  - set CSD limit to 2
  - set CA PREF to I
- Optional - multipoint; different DN for each B-channel, but same OE (office equipment.)
- list any additional data features required
- specify long distance carrier

## Northern Telecomm DMS-100 BC-35 National ISDN 1

Request from the telephone companies a National ISDN 1 ISDN line with 2B1Q line code. Your ISDN line must be configured to allow circuit switched data on both B-channels and signaling on the D-channel. The telephone company should supply you with a separate telephone number and SPID (Service Profile Identification) for each B-channel; however, it will physically be only one ISDN line. Request that the Telephone Company program your ISDN line with the following attributes:

B1 and B2 should be set as follows:

- Set the circuit switch option to Yes; set the barrier restriction option to no packet mode data (NOPMD) only (this tells the switch that you require circuit switch ability on your B-channel, The bearer restriction on your line means that you are not allowed packet data on your B-channel.)
- Set protocol to function version 2; (PVC2) (this tells the switch that your CPE software is using National ISDN 1 protocol.)
- Set the service profile identification (SPID) suffix to 1 (this tells the switch that the digit following your telephone number will be 1. The SPID format is *area code + 7 digit number + 1 + 00*.)
- Set the Terminal Endpoint Identifier (TEI) to Dynamic (this tells the switch that you can accept any TEI value from 64 to 126.)
- Set Ring to Yes (this tells the switch to send an alerting message to your CPE when there is an incoming call.)
- Set the maximum keys to 10 (this tells the switch how much memory to allocate for features.)
- Set Key system (EKTS) option to No (this tells the switch that you are not a key system.)
- Place the lower layer compatibility option for data on the B-channels (this tells the switch that your CPE may utilize the lower layer compatibility information element for data on the B-channels.)
- Place calling subaddress option for data on the B-channels (this tells the switch that your CPE will send a subaddress.)
- Place called subaddress option for data on the B-channels (this tells the switch that your CPE can receive a subaddress.)

The Telephone Company will also need to know any additional data features that you require on your ISDN lines.

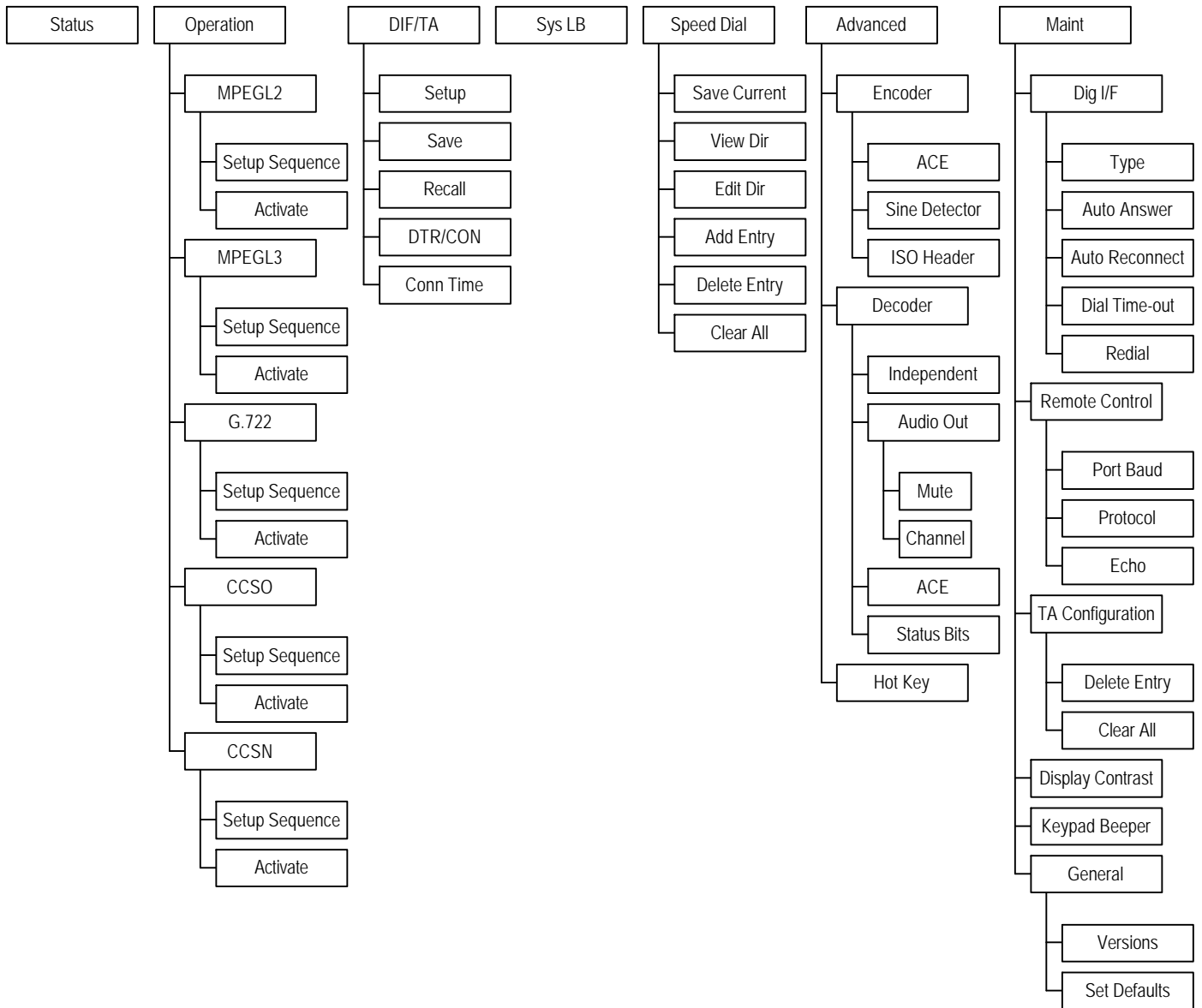
FAX-PAGE 5

## Northern Telecomm DMS-100 BC-35 National ISDN 1

- 2B1Q line code
- 2B&D line
- B1 - set circuit switch to YES; set BEARER RESTRICTION to NOPMD (no packet)
  - functional version 2; (PVC 2)
  - set SPID-SUFFIX to 1
  - set TEI to DYNAMIC
  - set RING to YES
  - set MAXKEYS to 10
  - set EKTS to NO
  - set data option: PROVLLC CMDATA (lower layer compatibility)
  - set data option: PROVCGS CMDATA (calling subaddress)
  - set data option: PROVCDs CMDATA (called subaddress)
- B2 - set circuit switch to YES; set BEARER RESTRICTION to NOPMD (no packet)
  - functional version 2; (PVC 2)
  - set SPID-SUFFIX to 1
  - set TEI to DYNAMIC
  - set RING to YES
  - set MAXKEYS to 10
  - set EKTS to NO
  - set data option: PROVLLC CMDATA (lower layer compatibility)
  - set data option: PROVCGS CMDATA (calling subaddress)
  - set data option: PROVCDs CMDATA (called subaddress)

List any additional data features required for B1 and B2

## Appendix D — Menu Tree - ISDN Operation



## Appendix E — Warranty

MUSICAM USA, formerly known as Corporate Computer Systems (CCS) warrants to the original purchaser that each of its hardware products and all components therein contained will be free from defects in materials and/or workmanship for one (1) year from the date of purchase. Any warranty hereunder is extended only to the original purchaser and is not assignable.

In the event of a malfunction or other indication of failure attributable directly to faulty workmanship and/or material, MUSICAM USA will, at its option, repair or replace said device or components, to whatever extent it shall deem necessary to restore said device to proper operating condition.

Before returning a device for repair, the customer must call MUSICAM USA at (732)739-5600 and obtain a return authorization number. This number should be included with the customer's mailing address and telephone number when the product is returned.

**Products must be returned to:  
MUSICAM USA  
670 North Beers St. Building #4  
Holmdel, NJ 07733  
U.S.A.  
Attention: Warranty Repair**

During the first year after the date of purchase, all labor and materials will be provided without charge. There shall be no warranty for either parts or labor after the expiration of 1 year from the date of purchase.

Units must be returned postage pre-paid. It is recommended that the unit be insured and securely packed when shipped. Units returned which are out of warranty will be repaired or replaced (at the option of MUSICAM USA) and the customer will be charged for parts and labor at current rates.

Units will be returned to the customer after repair or replacement has been completed by carrier and method chosen by MUSICAM USA to any destination within the United States of America. Should a customer desire some other specific form of conveyance, or be located beyond the US borders, then the customer must bear the cost of return shipment.

The customer shall be solely responsible for the failure of any MUSICAM USA hardware computer product, or component thereof, resulting from accident, abuse or misapplication of the product, and MUSICAM USA assumes no liability as a consequence of such events under the terms of this Warranty.

---

While every effort on the part of MUSICAM USA has been made to provide clear and accurate technical information on the application of its products, MUSICAM USA assumes no liability in any events which may arise from the use of said technical information.

**THERE ARE NO OTHER WARRANTIES MUSICAM USA DISCLAIMS ALL OTHER WARRANTIES, EITHER EXPRESS OR IMPLIED, INCLUDING BUT NOT LIMITED TO IMPLIED WARRANTIES OF MERCHANTABILITY AND FITNESS FOR A PARTICULAR PURPOSE. THIS LIMITED WARRANTY GIVES YOU SPECIFIC LEGAL RIGHTS. YOU MAY HAVE OTHERS, WHICH VARY FROM STATE TO STATE.**

**NO LIABILITY FOR CONSEQUENTIAL DAMAGES IN NO EVENT SHALL MUSICAM USA OR ANY OF ITS SUPPLIERS BE LIABLE FOR ANY DAMAGES WHATSOEVER (INCLUDING, WITHOUT LIMITATION, DAMAGES FOR LOSS OF BUSINESS PROFITS, BUSINESS INTERRUPTION, LOSS OF DATA COMMUNICATIONS, LOSS OF BUSINESS INFORMATION, OR OTHER PECUNIARY LOSS) ARISING OUT OF THE USE OF, OR INABILITY TO USE, THIS MUSICAM USA PRODUCT, EVEN IF MUSICAM USA HAS BEEN ADVISED OF THE POSSIBILITY OF SUCH DAMAGES. BECAUSE SOME STATES DO NOT ALLOW THE EXCLUSION OR LIMITATION OF LIABILITY FOR CONSEQUENTIAL OR INCIDENTAL DAMAGES, THE ABOVE LIMITATIONS MAY NOT APPLY TO YOU.**

# Index

- Algorithm
    - Cascading, 4, 5
    - CCSN, 31
    - CCSO, 31
    - G.722, 5, 30
    - MPEG Layer 2, 4, 31
    - MPEG Layer 3, 4, 31
    - MUSICAM, 4, 31
  - Audio mixer, 28
  - Automatic redial, 26
  - Broadcasting, 5, 36
  - Commands
    - CAA, 26
    - CAC, 26
    - CCC, 23, 24
    - CCV, 44
    - CDI, 41
    - CDS, 39
    - CFD, 44
    - CHU, 41
    - CIB, 21
    - CIF, 16
    - CLC, 19, 20
    - CLD, 20, 23, 25
    - CLL, 20, 24, 25
    - CPC, 42
    - CRB, 42
    - CRD, 26
    - CRE, 42
    - CSA, 20, 25
    - CSD, 38, 40
    - CSE, 39
    - CSI, 19, 23
    - CSL, 30
    - CSW, 18, 23, 24
    - CTD, 28
    - CTE, 27
    - CTF, 21, 25
    - CTO, 26
    - CTR, 21, 24, 25
    - DAL, 35
    - DBR, 35
    - DCS, 35
    - DIN, 35
    - DLI, 35
    - DMU, 29, 35
    - DRS, 36
    - DSP, 35
    - ECR, 34
    - EEP, 34
    - EOR, 34
    - EPI, 34
    - EPR, 34
    - ESD, 34
    - ESP, 34
    - HELP, 41
    - MBX, 44
    - MVN, 42
    - VER, 27
  - Comrex, 35
  - Decoder, 30
    - Advanced setup, 34
    - Algorithm, 35
    - Bit rate, 35
    - Independent, 32, 35
    - Line format, 35
    - Status bits, 36
  - Dialing
    - Manual dialing, 40
    - Speed Dialing, 40
    - Termination, 41
  - Digital interface, 3, 6
    - Installation, 11
    - RS422, 7, 11
    - RS449, 11
    - Selection, 16, 44
    - Terminal adapter, 6
    - Terminal adapters, 4
    - V.35, 7, 12
    - X.21, 7, 12
  - Encoder, 30
    - Advanced setup, 33
    - Header bits, 34
    - Quick setup, 32
    - Sine detector, 34
    - Status, 32
  - Factory defaults
    - Reset, 44
  - Front panel, 3, 7, 8
    - Indicators, 4
    - Keypad, 4
  - Help, 41
  - Hot keys, 15
  - Input
    - Balanced, 3
    - Level, 29
    - Level select, 28
    - Line, 3, 7, 9, 28
    - Microphone, 3, 7, 9, 28
    - Mixing, 10
    - Opto-isolator, 10
    - Remote control, 7, 10, 41
    - Unbalanced, 28
  - ISDN Provisioning, 57
  - Keypad, 4, 15
    - Alphanumeric, 15
    - Beeper, 44
    - Dial, 15
    - Hot keys, 15, 43
  - LCD display, 15
    - Brightness, 44
    - Status, 33
  - LED
    - Clip, 4, 29
    - Cue, 4
    - Norm, 4, 29
    - On Line, 4, 14
    - Power, 4
  - Loopback, 6, 29
  - Menu navigation, 15
  - Music line, 38
  - NT-1, 7, 13, 17, 22
  - Output
    - Balanced, 3, 7, 10, 29
    - Headphone, 3, 7, 10, 29
    - Local, 3, 7, 10, 29
    - Mute, 29
    - Relay, 7, 10, 41
    - Return, 3, 7, 10, 29
    - Unbalanced, 3, 7, 10, 29
  - PKI, 32
  - Power, 6, 7, 10
  - Quick Configuration, 36, 40
    - Add entry, 39
    - Delete entry, 39
    - Edit entry, 39
  - Quick setup, 32
  - Quick Status, 32
  - Rear panel, 3, 7, 9
  - Reboot, 43
  - Remote control, 10, 14, 41
-

Scale Factor Protection, 34, 35

Software

- Upgrade, 4, 42
- Version, 42

Speed Dial, 36, 40

- Add entry, 39
- Delete entry, 39
- Edit entry, 39

Telos Zephyr, 35

Terminal adapter, 6

- Auto answer, 26
- Auto reconnect, 26
- Configuration, 16, 27

Configuration memory, 27, 28

Connections, 7

Country selection, 13, 17, 23, 24

EAZ, 20

ID, 18, 19, 23

Interface mode, 21, 25

LEDs, 7

LLC, 20, 23, 25

Local check, 18, 20

MSN, 20, 24

Redial, 26

Reset, 21, 24, 25

SPID, 18, 19, 23

Sub address, 20, 25

Switch type, 18, 22, 24

TA101, 6, 13, 17

TA201, 6, 13, 22, 24

TA301, 7, 13, 22

Time out, 26

Version, 27

Terminal Adapter

- Inband, 21

Troubleshooting

- Audio, 45
- Connections, 48, 50
- Control, 54
- Terminal adapter, 51, 53