

Application Note: CCS Discover Utility

App. Note
March 2009

Application Note

Index

Index	2
CCS Discover Utility	3
I.1 Installation	3
I.2 Discover Utility features	4
I.3 Customizing Discover Utility	5

Application Note

CCS DISCOVER UTILITY

CCS/MUSICAM USA provides a software tool which discovers any CCS Suprima family IP Codec attached to a private IP network. This application is designed to provide the network manager or codec operators with an easy and up-to-date overview of all Suprima Family codec resources available on the network.

Any detachment or new attachment of a Suprima Family codec can be adverted early. Therefore the network manager is empowered to resolve conflicts as soon as possible.

Unknown IP addresses (DHCP) can be retrieved for newly installed IP Codecs if the front panel access is not possible.

I.1 Installation

CCS Discover Utility is a program running under Microsoft Windows Operation System. This software can be obtained from the MUSICAM USA web page (www.musicamusa.com).

There is no installation required, and this program can run from any folder, so just download to a folder on your PC and run it from there.

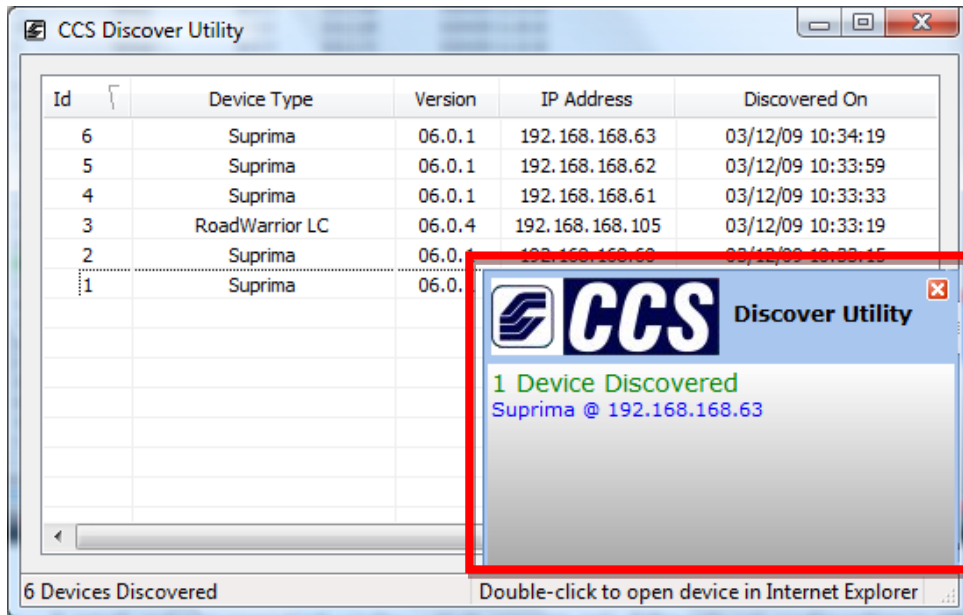
No limitation to the amount of CCS Discover Utility instances on different computers is foreseen.

However the user must be aware that CCS Discover Utility can only poll for the codecs included on the same subnets as the computer where the utility is running. For example, if a computer has access to following subnets: 10.0.0.1 /8 and 192.168.1.1 /24, than any codecs that are on the company subnet 192.168.17.1 /24 are not accessible for CCS Discover Utility running on this computer.

Application Note

I.2 Discover Utility features

The Discover Utility shows CCS Suprima family codecs network information via two different windows:



- A small and non-persistent window which appears only if the network configuration is different since the last network polling cycle (red box).
- An enhanced and steady window which displays the complete list of Suprima family codecs available on the user network. This window can be minimized at any time. Its information will remain up to date.

On the steady window the codec operator may retrieve the actual Device Type, software version, IP address and other details.

A green shadow reminds that the display has been updated few seconds ago; after that, the green shadow disappears until the next discover cycle.

The user might display the network information ordered by codec type, codec release, IP address, etc.

A quick access to any codec is also provided. By double clicking on a device from the list, Internet Explorer will open with this codec's address.

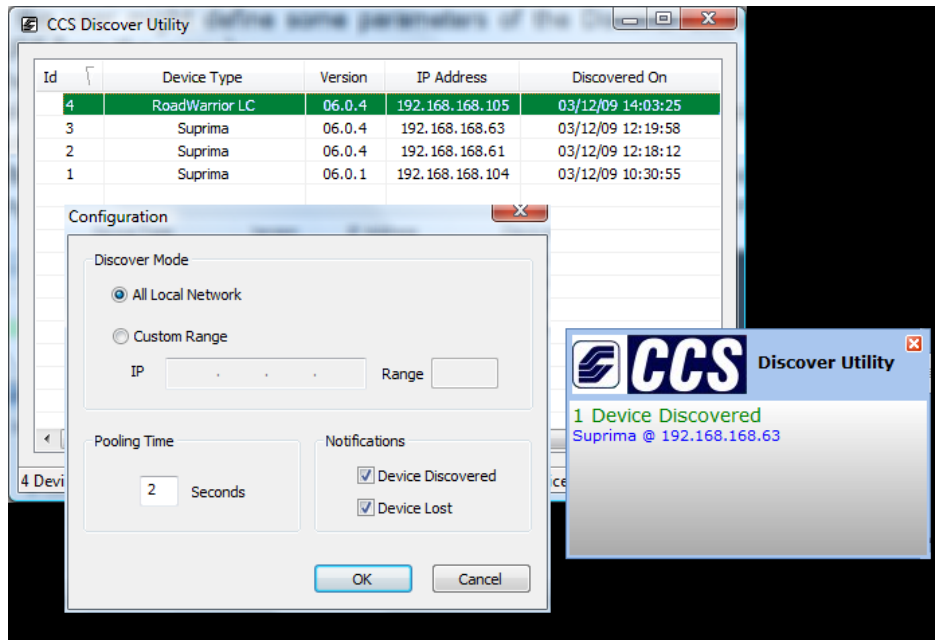
Application Note

I.3 Customizing Discover Utility



Clicking mouse-right-button the icon of the resident CCS Discover icon in Windows Tool Bar the user might define some parameters of the Discover Utility (select CONFIGURE from the menu):

- The polling period for the network (2 seconds by default).
- Selection if either new discovered devices, lost devices or both since the last polling cycle are prompted on the non-persistent window.
- Filtering of the management scope from the complete local network until any sub-network defined with the IP address and a sub-network mask.¹



By clicking mouse-right-button the icon of the resident CCS Discovery icon in Windows Tool Bar the user can also exit the Discover Utility program on this computer. By default the next time the Microsoft Windows Operation System is started the Discovery Utility is initiated again.

¹ The subnetwork mask is limited from 0 to 255.